



# PARTS CATALOG

Published 2011/10 (Oct.)

0CNP5-G50700

## Directions for the Parts Catalog.

- The parts stipulated in this Parts Catalog are not necessarily standard equipped parts.
- Parts may change without prior notice.
- The following is an example of the Parts Catalog format.

OCF10-G21601 29. FUEL INJECTION PUMP(W/BOOST)

REF.	LEV.	PARTS NO.	DESCRIPTION	Q'TY						I	R
				(A)	(B)	(C)	(D)	(E)	(F)		
1	1	729595-51390	FUEL INJECTION PUMP	1	1	1	1	1			1
1-1	1	729595-51391	FUEL INJECTION PUMP	1	1	1	1	1		N	1
		(A=E00185) (B=E00200)									
3	2	26022-060162	SCREW M 6X 16	9	9	9	9	9			
3-1	2	26022-060162	SCREW M 6X 16	4	4	4	4	4		K	
		(A=E00156) (B=E00156) (C=E00156) (D=E00156) (E=E00156)									
4	2	129470-51040	CAMSHAFT	1	1	1	1	1			
5	2	122710-51050	BEARING, ROLLER	2	2	2	2	2			
6	2	129470-51060	RETAINER	1	1	1	1	1			

Remarks

(1) BOOST COMPEMSATOR TYPE. OPTIONAL PART, TO E00155,(4JH-DT, 4JH-DTZ

### ① Ref. No.

The Ref. No. listed may not be in accordance with the illustration Ref. No.

(Ex.) Illustration No.

List Ref No.

1

1

(Before change)

1-1

(After change)

For interchangeable symbols N, R and K, illustrations for new parts may be abbreviated.

### ② Lev. (Level)

Level indication

The numbers below indicate the level of relativity towards the main part.

1 ----- Main parts (Assembly parts)

2 ----- Sub component included in " 1 ".

3 ----- Sub component included in " 2 ".

Note) Parts that are not for sale are partially illustrated but not listed.

### ③ Interchangeability Mark

When a part change takes place, one of the following interchangeability symbols is indicated beside the part.

Symbol	Interchangeability	Contents note
N	Old $\begin{matrix} \leftarrow \text{Yes} \\ \text{No} \rightarrow \end{matrix}$ New	New Part is interchangeable for Old Part but Old Part is not interchangeable for New Part.
Q	Old $\begin{matrix} \leftarrow \text{No} \\ \text{Yes} \rightarrow \end{matrix}$ New	New Part is not interchangeable for Old Part but Old Part is interchangeable for New Part.
R	Old $\begin{matrix} \leftarrow \text{Yes} \\ \text{Yes} \rightarrow \end{matrix}$ New	New/ Old Parts are both interchangeable.
S	Old $\begin{matrix} \leftarrow \text{No} \\ \text{No} \rightarrow \end{matrix}$ New	New/ Old Parts are both not interchangeable.
W		Part newly added.
Z		Part discontinued.
F		Not interchangeable by a single part but interchangeable together with related parts.
K		Changes only for used parts quantities.

### ④ Effective Machine No.

When a part changes, the effective Machine No. will be indicated in the (A)-(F) column.

Product Symbol	Product No.	Product Symbol	Product No.
C	Clutch No. Compressor No.	F	Machine No. (Agricultural Equip.)
D	Drive No.	M	Machine No.
E	Engine No.		

Note 1) A date may follow the symbol. (Ex.) 1996.01

Note 2) "XXXXX" and "ZZZZZ" are for parts that could not be predicted or for engine models that could not be identified.

Note 3) (A=E00185) is the E (Engine Serial Number) for the column (A) model (in this case 4JH-DT) after the parts design change.

### ⑤ Remarks Mark

Figures or alphabets (symbols) are entered in the remarks column.

The comments (remarks) on parts that are indicated at the bottom of the illustration are the same symbols as those stated above.

# CONTENTS

MODEL : JS-1080HT-SPQ  
PC NO : 0CNP5-G50700

Fig.No.	GROUP NAME
<b>ENGINE RELATED SECTION</b>	
1.	ENGINE RELATED
<b>DRIVE TRAVEL SECTION</b>	
2.	ENGINE CONTROL
3.	TENSION CLUTCH
4.	ENGINE PULLEY
5.	TRAVELING DRIVE BELT
6.	AUGER BELT
<b>CONTROL SECTION</b>	
7.	HANDLE(GRIP
8.	CONTROL PANEL
9.	DEAD MAN LEVER
10.	CLUTCH
11.	CLUTCH LOCK
12.	GRIP CLUTCH
13.	LEVER CHANGE
14.	CHANGE ROD
15.	LEVER CHUTE
16.	REFITTING
<b>CHASSIS &amp; COVER &amp; CRAWLER SECTION</b>	
17.	CHASSIS FRAME
18.	BRACKET
19.	BELT COVER
20.	CRAWLER
21.	CRAWLER FRAME
22.	CRAWLER GUIDE

Fig.No.	GROUP NAME
<b>ELECTRO. PARTS SECTION</b>	
23.	BATTERY
24.	HARNESS
25.	SWITCH
26.	SWITCH(E
27.	SWITCH(REL
28.	LAMPS
<b>SNOW REMOVING SECTION</b>	
29.	AUGER FRAME
30.	AUGER PLATE
31.	AUGER COVER
32.	AUGER BOTTOM
33.	CHUTE
34.	DEFLECTOR
35.	ROTATION
36.	GEAR CASE
37.	BLOWER SHAFT
38.	AUGER SHAFT
39.	AUGER
40.	BLOWER
41.	BRACKET
<b>LABELS &amp; ACCESSORIES</b>	
42.	LABEL
43.	LABEL(SAFETY
44.	TOOL
45.	ACCESSORY

# CONTENTS

MODEL : JS-1080HT-SPQ

PC NO : 0CNP5-G50700

Fig.No. GROUP NAME  
TRANSMISSION UNIT  
46. MISSION

Fig.No. GROUP NAME

Fig.1. ENGINE RELATED

(A)=JS-1080HT-SPQ

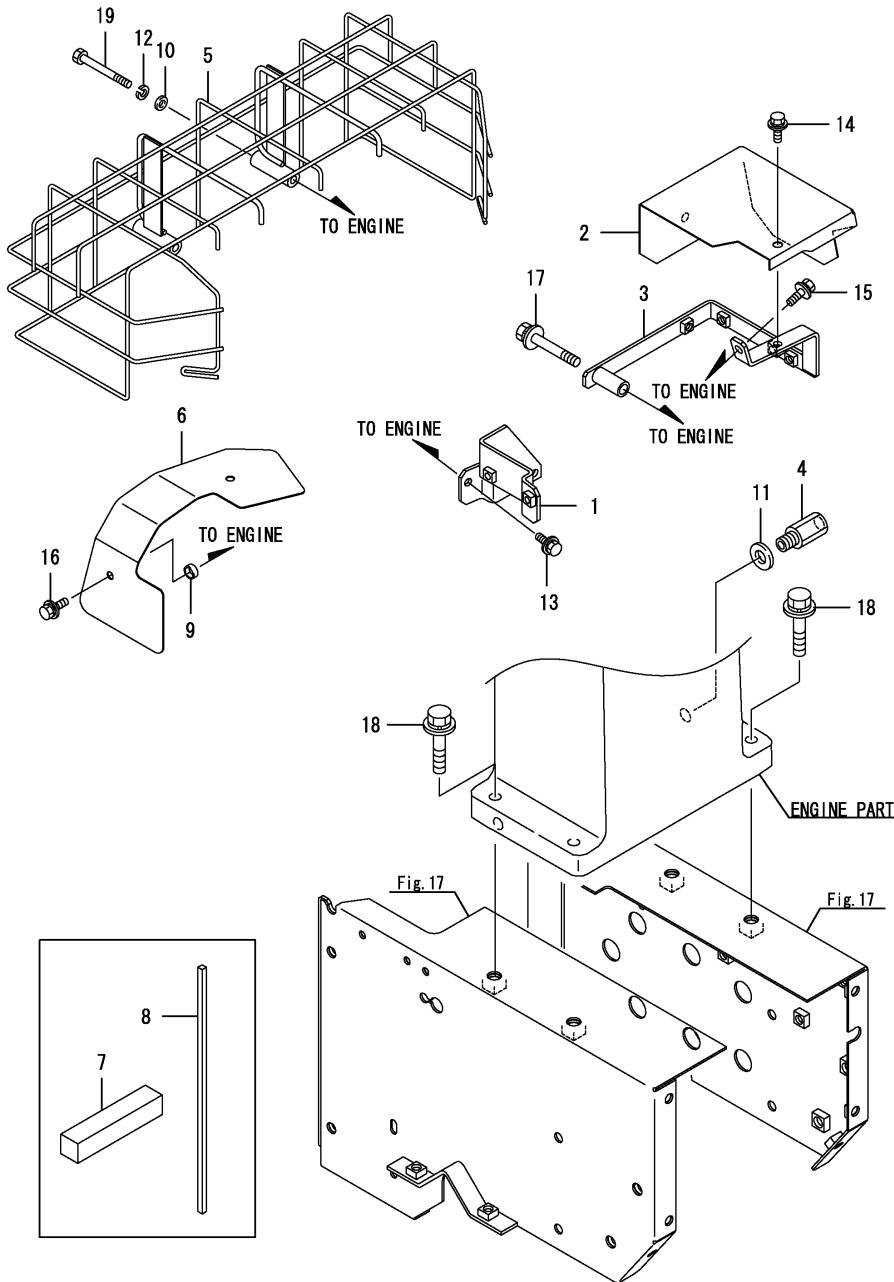
(B)=

(C)=

(D)=

(E)=

(F)=



REF.	LEV.	PARTS NO.	DESCRIPTION	QTY						I	R
				(A)	(B)	(C)	(D)	(E)	(F)		
1	1	1N3790-00050	STAY, FUEL COCK	1							
2	1	1N3790-00100	COVER, BRACKET	1							
3	1	1N3790-00150	STAY, BRACKET	1							
4	1	1N3790-00250	JOINT, DRAIN 12	1							
5	1	1N3790-00500	GUARD, MUFFLER	1							
6	1	1N3790-00700	COVER, LINK	1							
7	1	1N3790-00750	DAMPER, A	2							
8	1	1N3790-00760	DAMPER, B	1							
9	1	1N3790-00770	COLLAR,	2							
10	1	22137-060000	WASHER 6, POLISHED	2							
11	1	22190-120002	SEAL WASHER 12	1							
12	1	22217-060000	SPRING WASHER 6	2							
13	1	26014-060162	BOLT M 6X 16	4							
14	1	26014-060162	BOLT M 6X 16	2							
15	1	26014-060162	BOLT M 6X 16	1							
16	1	26014-060162	BOLT M 6X 16	2							
17	1	26014-080502	BOLT M 8X 50	1							
18	1	26014-100452	BOLT M10X45	4							
19	1	26116-060552	BOLT M 6X 55 PLATED	2							

Fig.2. ENGINE CONTROL

(A)=JS-1080HT-SPQ

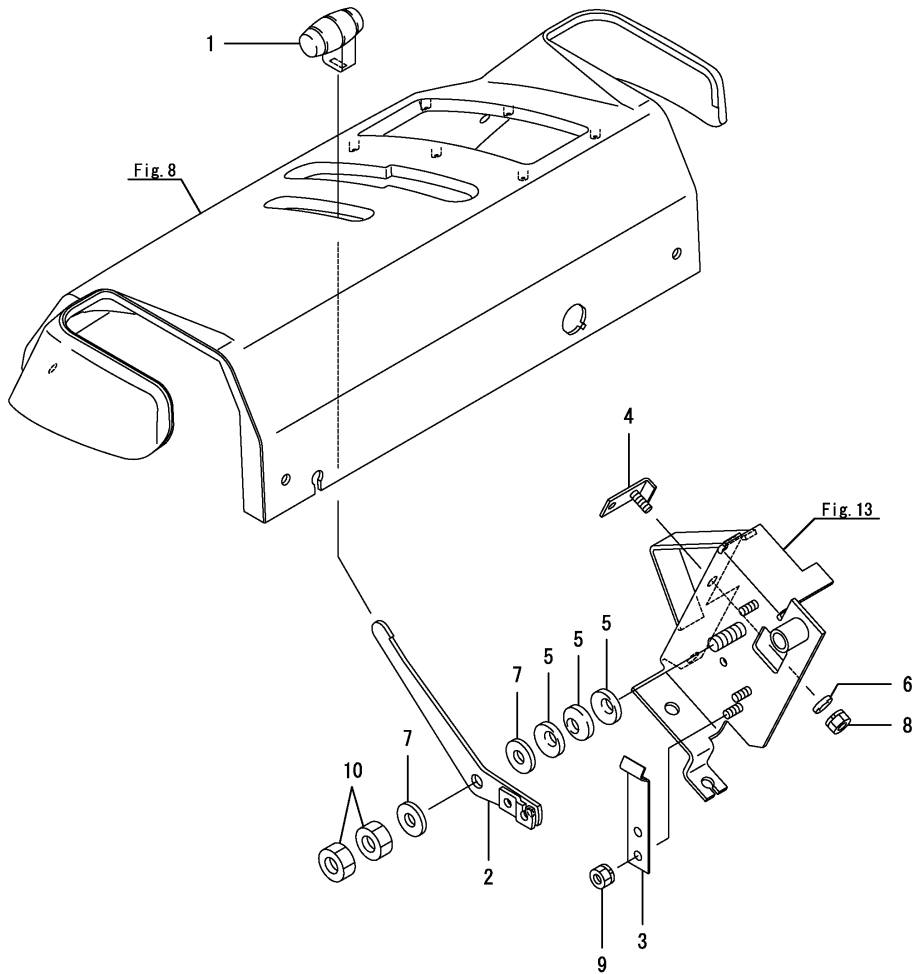
(B)=

(C)=

(D)=

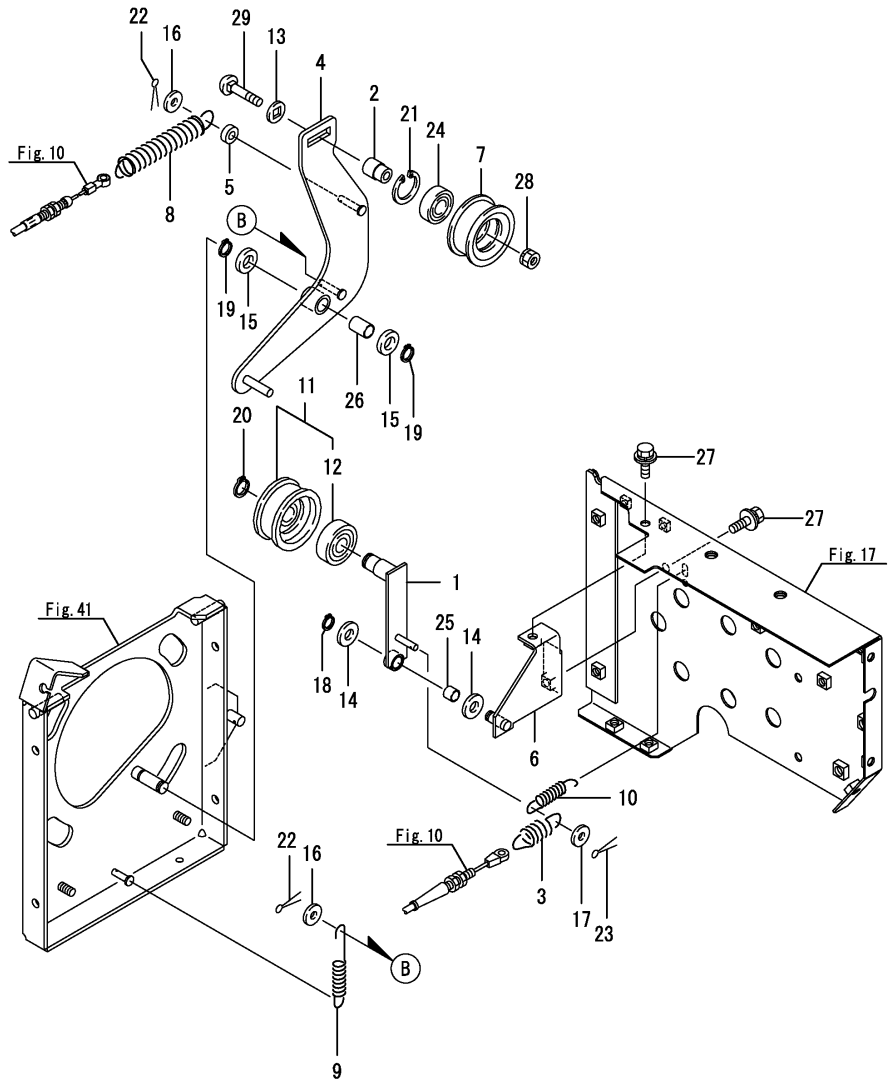
(E)=

(F)=



REF.	LEV.	PARTS NO.	DESCRIPTION	QTY						I	R
				(A)	(B)	(C)	(D)	(E)	(F)		
1	1	198273-01230	KNOB;ACCEL LEVER	1							
2	1	1N3790-02100	LEVER, ACCEL	1							
3	1	1N3790-02150	SPRING, STOPPER	1							
4	1	1N3850-02200	STOPPER, LEVER	1							
5	1	195385-35870	SPRING	3							
6	1	22137-060000	WASHER 6, POLISHED	1							
7	1	22137-100000	WASHER 10,POLISHED	2							
8	1	26051-060002	NUT M 6	1							
9	1	26051-060002	NUT M 6	2							
10	1	26717-100002	NUT M10	2							

Fig.3. TENSION CLUTCH



(A)=JS-1080HT-SPQ

(B)=

(C)=

(D)=

(E)=

(F)=

REF.	LEV.	PARTS NO.	DESCRIPTION	QTY						I	R
				(A)	(B)	(C)	(D)	(E)	(F)		
1	1	1N3790-11000	TENSION, TRAVEL	1							
2	1	1N3790-11050	SHAFT, PULLEY	1							
3	1	1N3335-11080	SPRING	1							
4	1	1N3790-11100	TENSION, WORK	1							
5	1	1N3790-11150	COLLAR, 6X14X5	1							
6	1	1N3790-11200	FULCRUM, TENSION	1							
7	1	1N3021-11240-1	PULLEY, 63 TENSION	1							
8	1	1N3790-11280	SPRING, 16X154	1							
9	1	1N3790-11270	SPRING, 12X95	1							
10	1	1N3860-11270	SPRING, 10X54	1							
11	1	1E7030-51302-1	ROLLER ASSY, TENSION	1							
12	2	24104-063020	BALL BEARING	1							
13	1	1N3320-71290	WASHER	1							
14	1	22137-100000	WASHER 10,POLISHED	2							
15	1	22137-120000	WASHER 12,POLISHED	2							
16	1	22157-060000	WASHER 6	2							
17	1	22157-060000	WASHER 6	1							
18	1	22242-000100	CIRCLIP 10	1							
19	1	22242-000120	CIRCLIP 12	2							
20	1	22242-000150	CIRCLIP 15	1							
21	1	22252-000350	CIRCLIP 35	1							
22	1	22417-160100	COTTER PIN	2							
23	1	22417-160100	COTTER PIN	1							
24	1	24104-062024	BALL BEARING	1							
25	1	24550-010100	BUSH 10X10,DRY	1							
26	1	24550-012200	BUSH 12X20	1							
27	1	26014-080202	BOLT M 8X 20	2							
28	1	26051-080002	NUT M 8	1							
29	1	26487-080402	BOLT, 8 X 40	1							

Fig.4. ENGINE PULLEY

0CNP5-G50700 4. ENGINE PULLEY

(A)=JS-1080HT-SPQ

(B)=

(C)=

(D)=

(E)=

(F)=

REF.	LEV.	PARTS NO.	DESCRIPTION	Q'TY						I	R
				(A)	(B)	(C)	(D)	(E)	(F)		
1	1	1N3790-12000	PULLEY, ENGINE	1							
2	1	1N3790-12100	RETAINER, BELT A	1							
3	1	1N3790-12170	RETAINER, BELT B	1							
4	1	1F1150-64230	WASHER 9X35X4.5,PLAI	1							
5	1	22550-070400	KEY, 7X40	1							
6	1	26013-080302	BOLT M 8X 30	1							
7	1	26014-080202	BOLT M 8X 20	2							

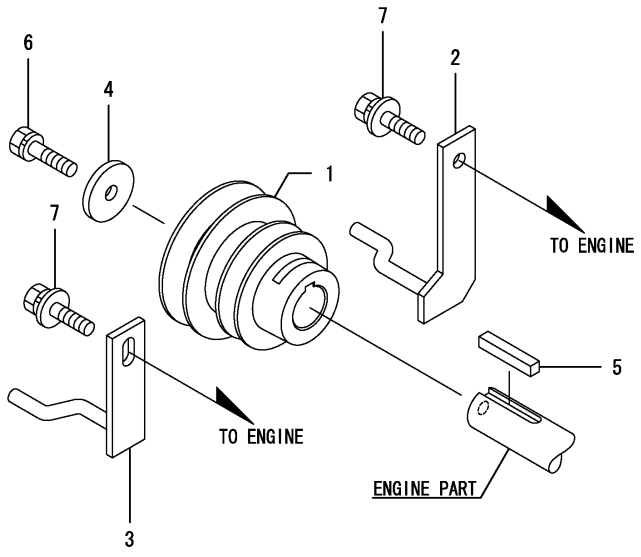




Fig.5. TRAVELING DRIVE BELT

0CNP5-G50700 5. TRAVELING DRIVE BELT

(A)=JS-1080HT-SPQ  
(B)=  
(C)=

(D)=  
(E)=  
(F)=

REF.	LEV.	PARTS NO.	DESCRIPTION	Q'TY						I	R
				(A)	(B)	(C)	(D)	(E)	(F)		
1	1	1N3790-12020	PULLEY, 146A	1							
2	1	1N3790-12300	GUIDE, BELT	1							
3	1	22242-000150	CIRCLIP 15	2							
4	1	22550-050201	KEY 5X20	1							
5	1	25122-003501	V-BELT	1							
6	1	26014-060162	BOLT M 6X 16	2							

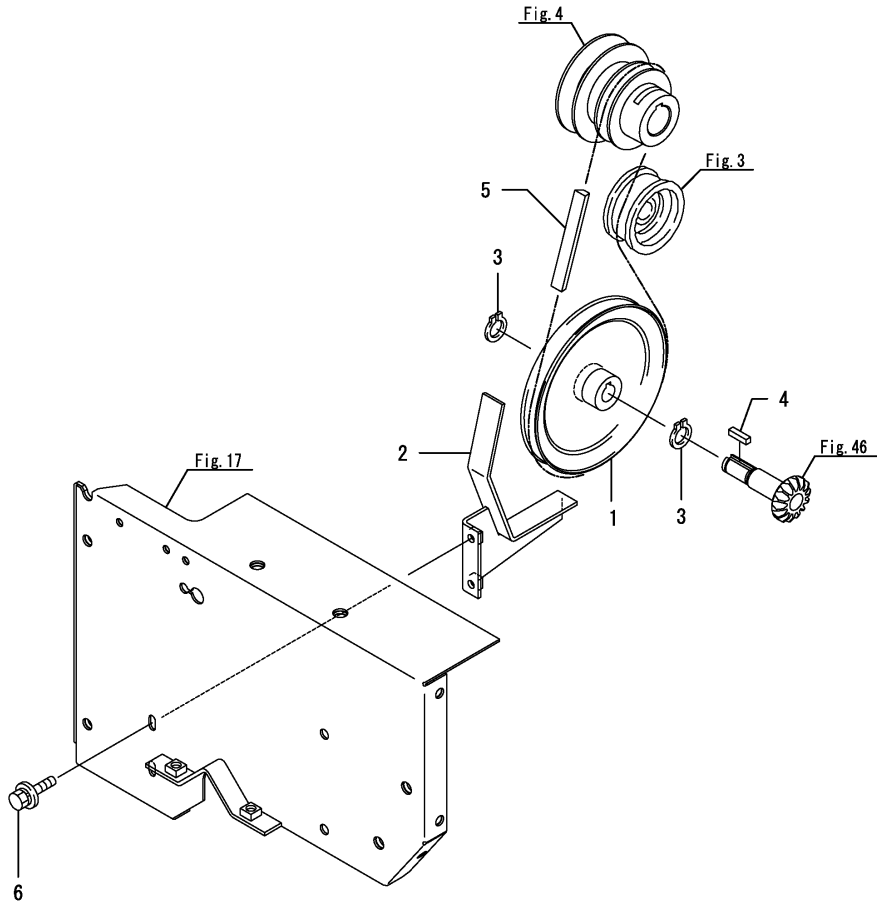
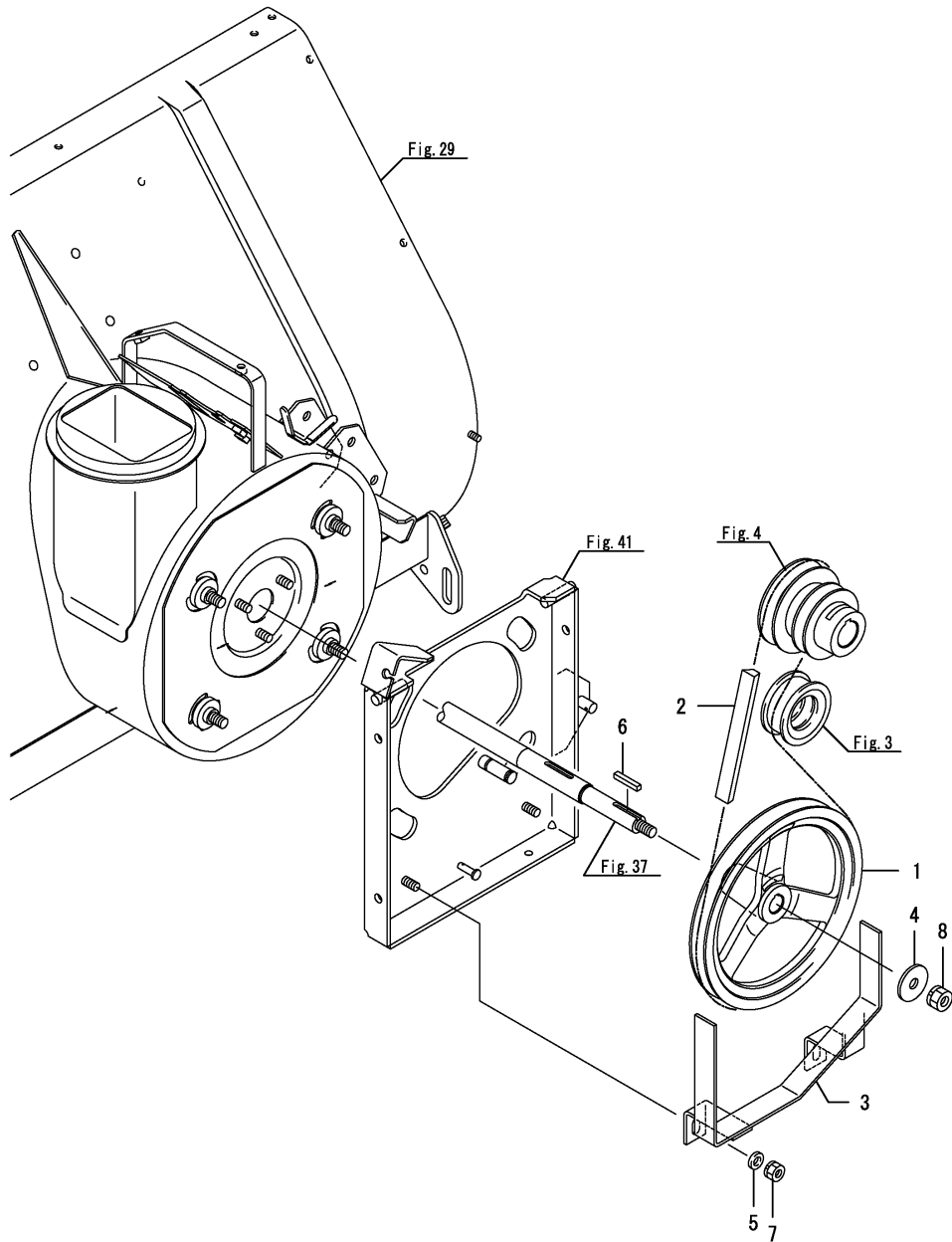


Fig.6. AUGER BELT



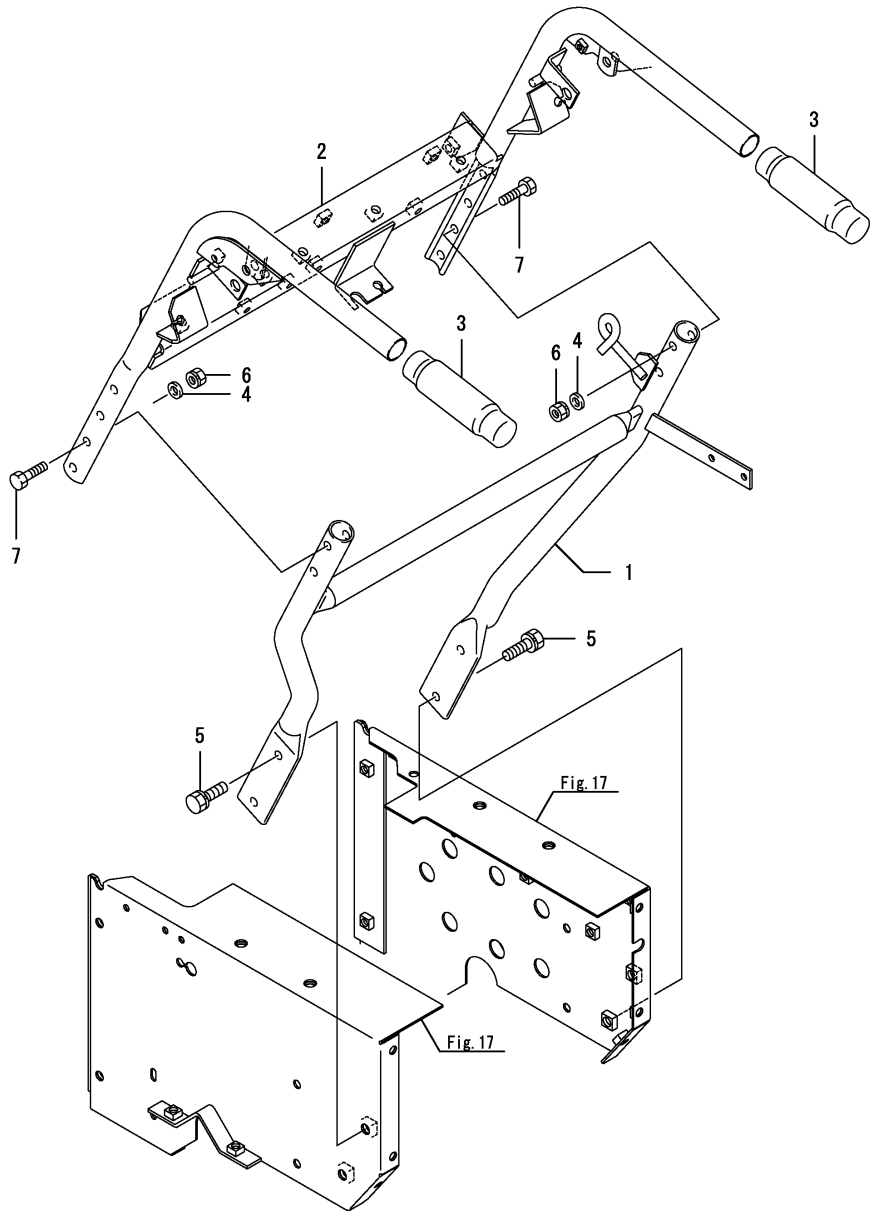
OCNP5-G50700 6. AUGER BELT

(A)=JS-1080HT-SPQ  
(B)=  
(C)=

(D)=  
(E)=  
(F)=

REF.	LEV.	PARTS NO.	DESCRIPTION	Q'TY						I	R
				(A)	(B)	(C)	(D)	(E)	(F)		
1	1	1N3790-12010	PULLEY, 204B	1							
2	1	1N3270-12050	V-BELT LB37-AG6	1							
3	1	1N3790-12400	GUIDE, BELT	1							
4	1	1S7302-30370	WASHER, 36X10.5X3	1							
5	1	22137-080000	WASHER 8, POLISHED	2							
6	1	22550-050300	KEY 5X30	1							
7	1	26051-080002	NUT M 8	2							
8	1	26051-100002	NUT M10	1							

# Fig.7. HANDLE(GRIP)



## 0CNP5-G50700 7. HANDLE(GRIP)

(A)=JS-1080HT-SPQ  
(B)=  
(C)=

(D)=  
(E)=  
(F)=

REF.	LEV.	PARTS NO.	DESCRIPTION	QTY						I	R
				(A)	(B)	(C)	(D)	(E)	(F)		
1	1	1N3790-30200	FRAME, GRIP	1							
2	1	1N3790-30500	FRAME, HANDLE(GRIP)	1							
3	1	1N1710-82140	GRIP BK-8,HANDLE	2							
4	1	22137-080000	WASHER 8, POLISHED	4							
5	1	26013-100202	BOLT W/WASHER M10X20	4							
6	1	26051-080002	NUT M 8	4							
7	1	26116-080402	BOLT M 8X 40 PLATED	4							

Fig.8. CONTROL PANEL

0CNP5-G50700 8. CONTROL PANEL

(A)=JS-1080HT-SPQ  
(B)=  
(C)=

(D)=  
(E)=  
(F)=

REF.	LEV.	PARTS NO.	DESCRIPTION	QTY						I	R
				(A)	(B)	(C)	(D)	(E)	(F)		
1	1	1J3999-00040	BOLT 6X16 W/PLW+SPW.	4							
2	1	1N3850-30350	STAY, L	1							
3	1	1N3790-30400	STAY, R	1							
4	1	7N3790-30400	PANEL, CONTROL	1							
5	1	26014-080202	BOLT M 8X 20	2							

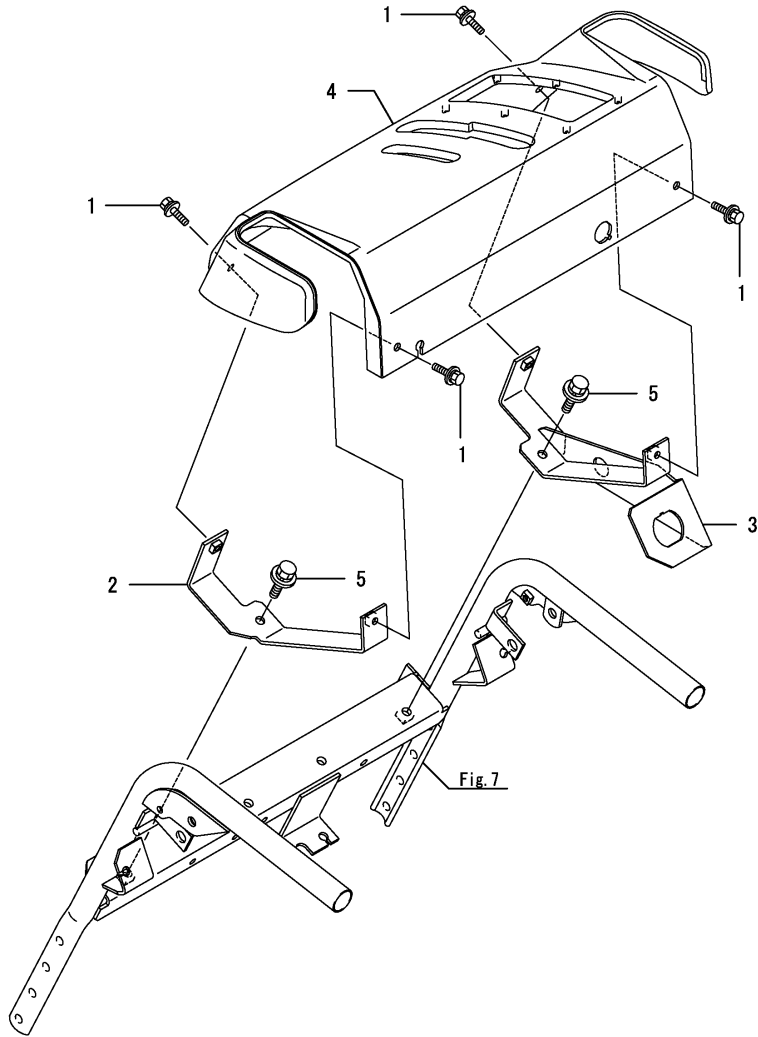


Fig.9. DEAD MAN LEVER

0CNP5-G50700 9. DEAD MAN LEVER

(A)=JS-1080HT-SPQ

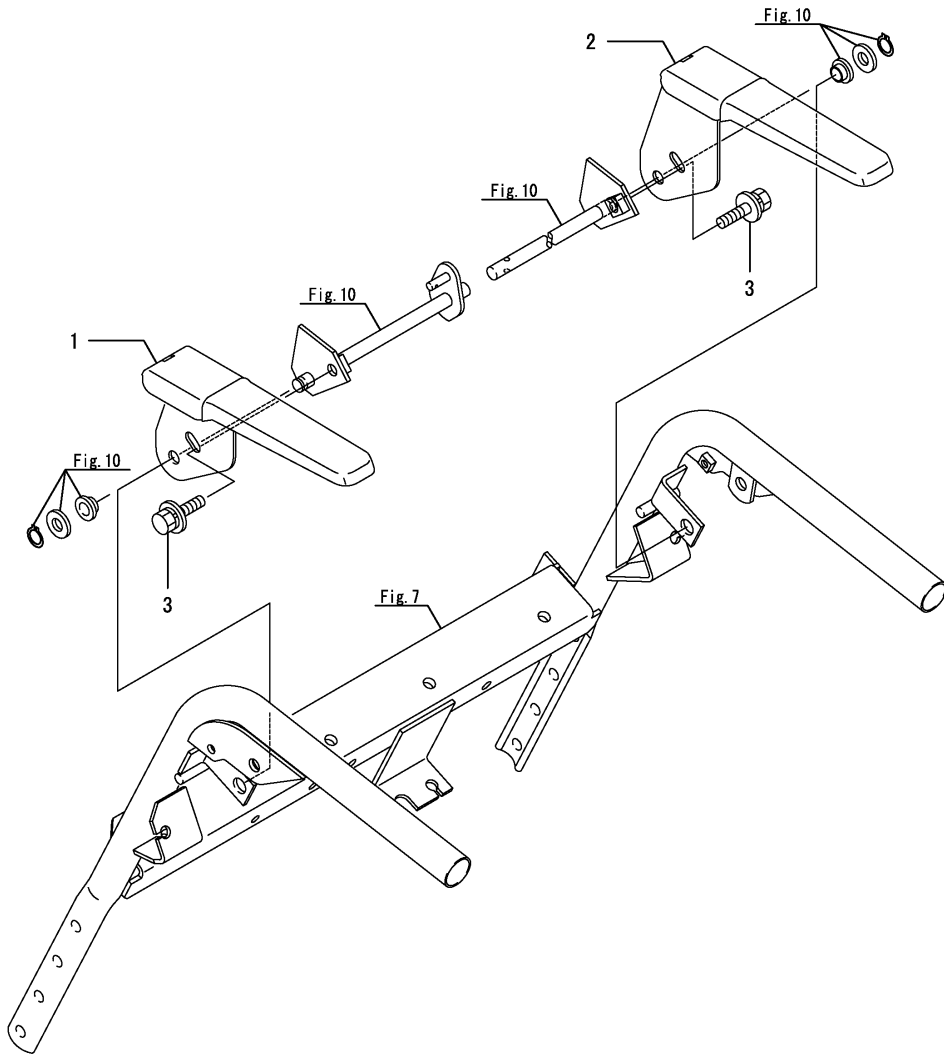
(B)=

(C)=

(D)=

(E)=

(F)=



REF.	LEV.	PARTS NO.	DESCRIPTION	QTY						I	R
				(A)	(B)	(C)	(D)	(E)	(F)		
1	1	1N3850-31000	LEVER, DEADMAN L	1							
2	1	1N3850-31100	LEVER, DEADMAN R	1							
3	1	26014-080202	BOLT M 8X 20	2							

Fig.10. CLUTCH

(A)=JS-1080HT-SPQ

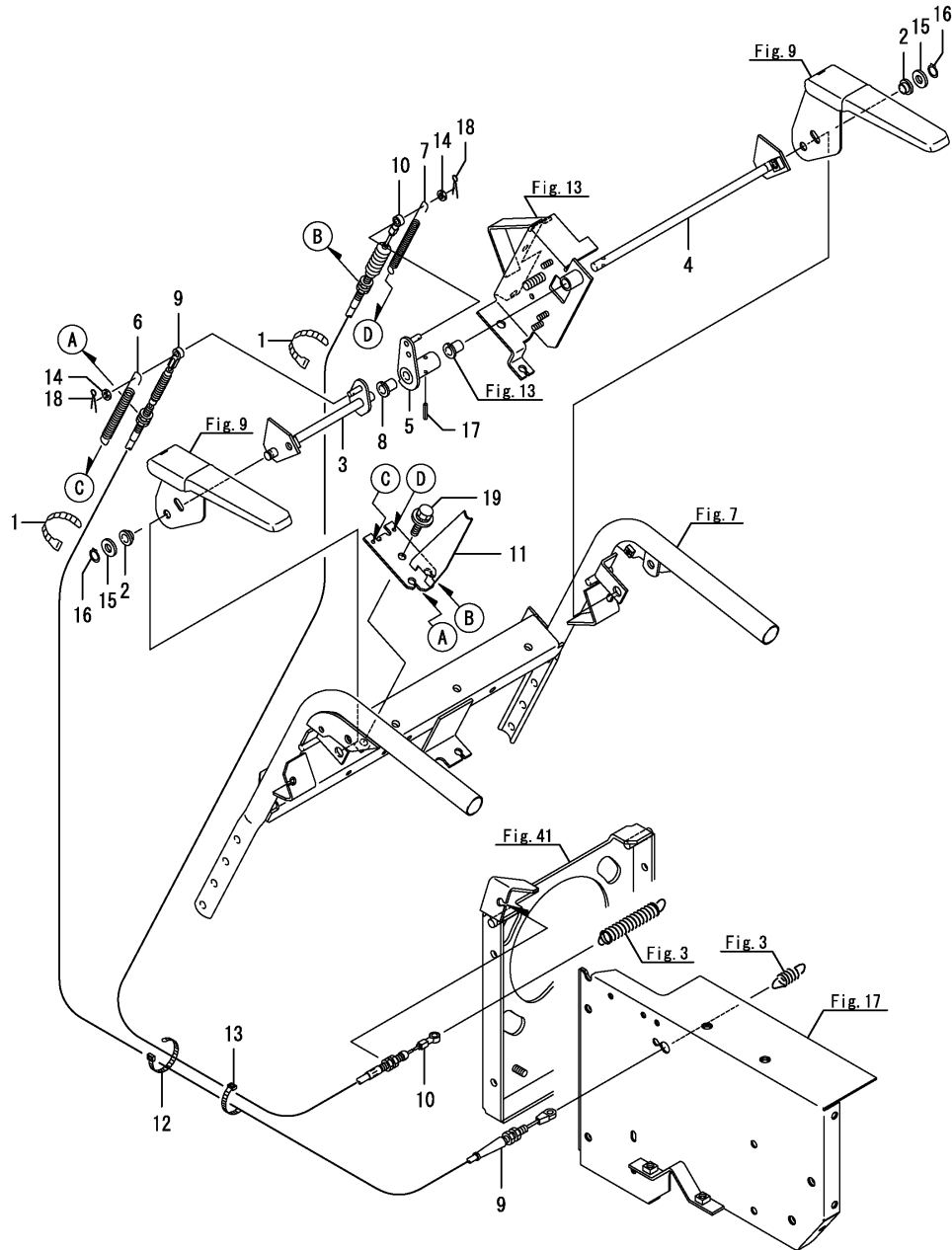
(B)=

(C)=

(D)=

(E)=

(F)=



REF.	LEV.	PARTS NO.	DESCRIPTION	QTY						I	R
				(A)	(B)	(C)	(D)	(E)	(F)		
1	1	1J3999-07000	BAND 100B	2							
2	1	1N3440-21300	BUSH, 10X3	2							
3	1	1N3850-31200	SHAFT, CLUTCH	1							
4	1	1N3850-31300	SHAFT, CLUTCH	1							
5	1	1N3790-31300	CLUTCH, WORK	1							
6	1	1N3850-31451	SPRING, 11.5X140	1							
7	1	1N3850-31460	SPRING, 9X140	1							
8	1	1N3021-31580	BUSH 10X15,FLANGED	1							
9	1	1N3790-31600	WIRE, TRAVELING	1							
10	1	1N3790-31650	WIRE, WORK	1							
11	1	1N3910-31701	MOUNT, WIRE	1							
12	1	1E6102-84960	BAND 250,WIRE LOCK	1							
13	1	1E6102-84970	BAND 140,WIRE LOCK	1							
14	1	22137-060000	WASHER 6, POLISHED	2							
15	1	22137-100000	WASHER 10,POLISHED	2							
16	1	22242-000100	CIRCLIP 10	2							
17	1	22351-040020	SPRING PIN 4X20	1							
18	1	22417-200100	COTTER PIN 2.0X10	2							
19	1	26014-080202	BOLT M 8X 20	1							

Fig.11. CLUTCH LOCK

0CNP5-G50700 11. CLUTCH LOCK

(A)=JS-1080HT-SPQ

(B)=

(C)=

(D)=

(E)=

(F)=

REF.	LEV.	PARTS NO.	DESCRIPTION	Q'TY						I	R
				(A)	(B)	(C)	(D)	(E)	(F)		
1	1	1N3850-31751	SPRING, LOCK	1							
2	1	22157-060000	WASHER 6	2							
3	1	26013-060162	BOLT M 6X 16	2							

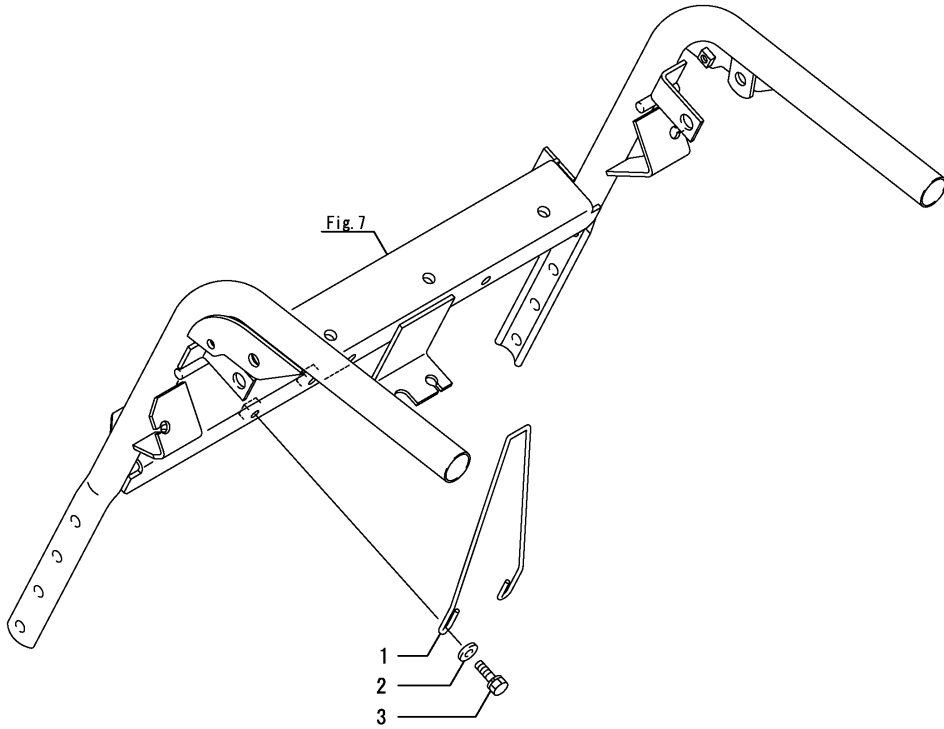


Fig.12. GRIP CLUTCH

(A)=JS-1080HT-SPQ

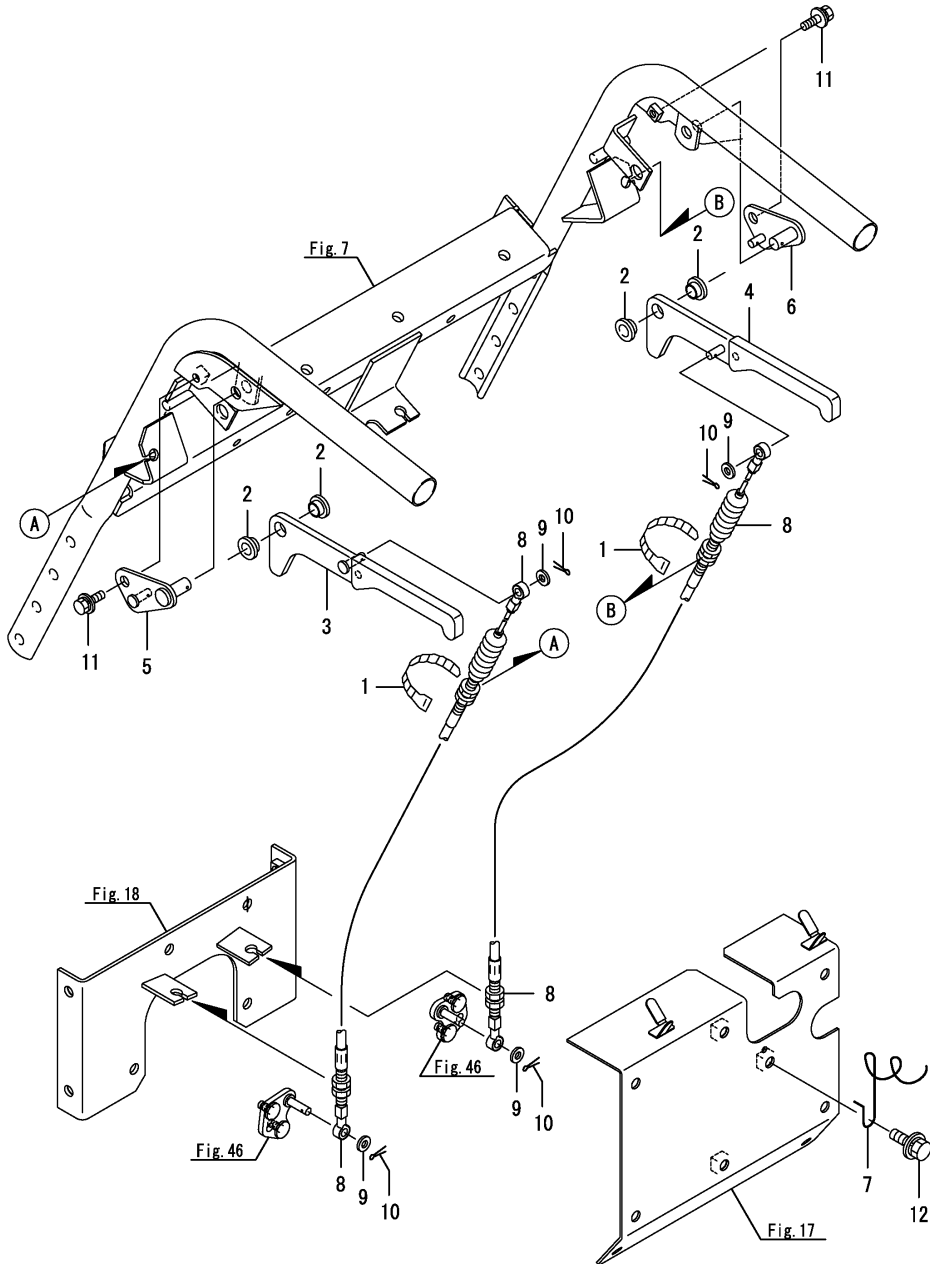
(B)=

(C)=

(D)=

(E)=

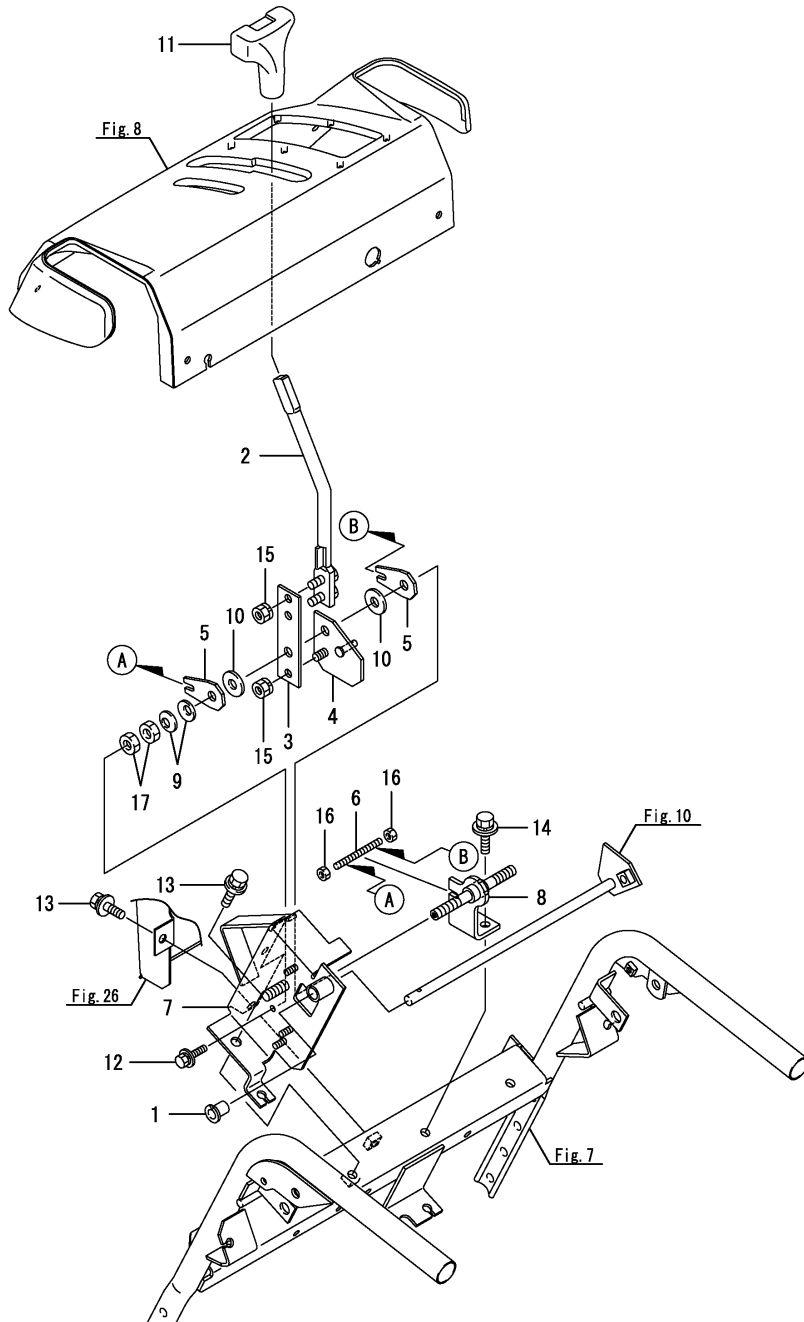
(F)=



REF.	LEV.	PARTS NO.	DESCRIPTION	QTY						I	R
				(A)	(B)	(C)	(D)	(E)	(F)		
1	1	1J3999-07000	BAND 100B	2							
2	1	1N3440-21300	BUSH, 10X3	4							
3	1	1N3790-31400	LEVER, SIDE CLUCH L	1							
4	1	1N3790-31420	LEVER, SIDE CLUCH R	1							
5	1	1N3790-31500	LEVER, FULCRUM L	1							
6	1	1N3790-31520	LEVER, FULCRUM R	1							
7	1	1N3790-31910	GUIDE, WIRE	1							
8	1	1N3790-31920	WIRE ASSY, GRIP	2							
9	1	22137-060000	WASHER 6, POLISHED	4							
10	1	22417-160100	COTTER PIN	4							
11	1	26014-060162	BOLT M 6X 16	2							
12	1	26014-080202	BOLT M 8X 20	1							



Fig.13. LEVER CHANGE



OCNP5-G50700 13. LEVER CHANGE

(A)=JS-1080HT-SPQ

(B)=

(C)=

(D)=

(E)=

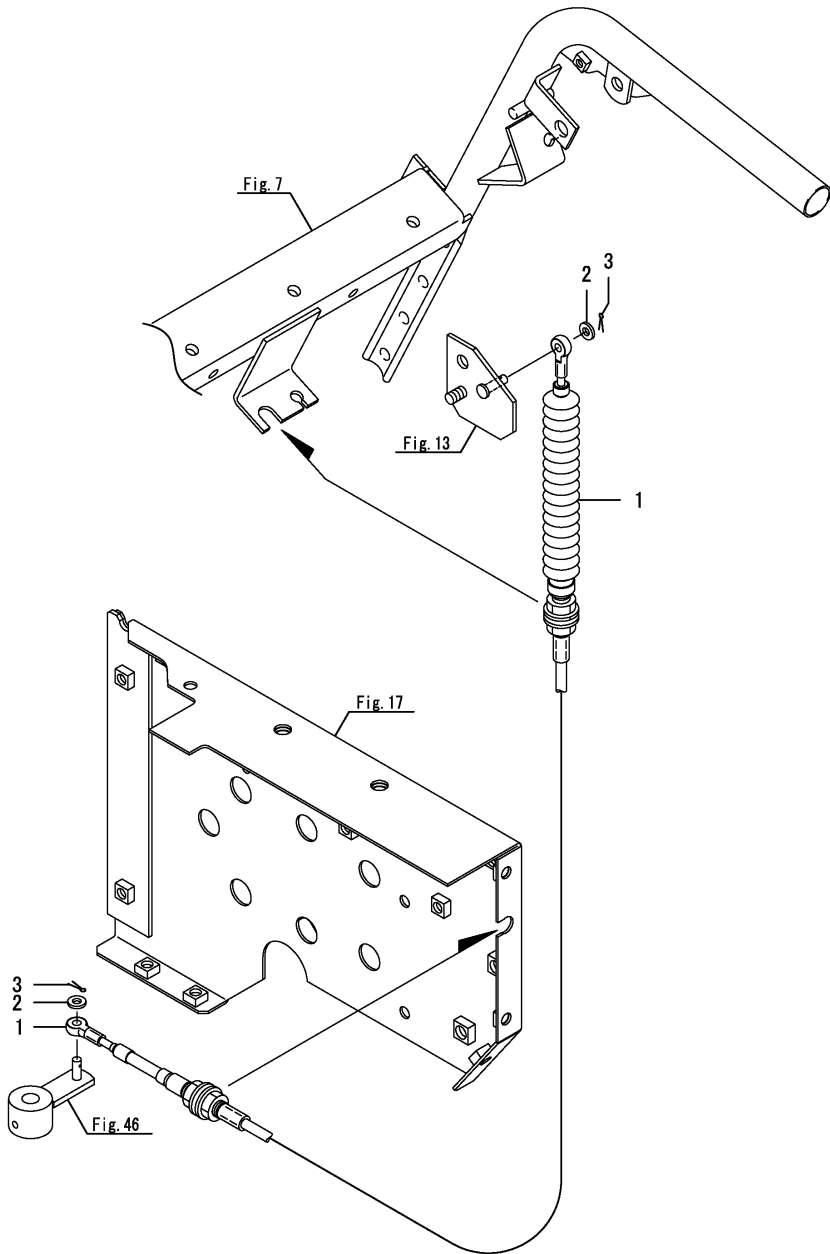
(F)=

REF.	LEV.	PARTS NO.	DESCRIPTION	QTY						I	R
				(A)	(B)	(C)	(D)	(E)	(F)		
1	1	1N3021-31580	BUSH 10X15,FLANGED	1							
2	1	1N3840-32000	LEVER, CHANGE	1							
3	1	1N3850-32050-1	SPRING, LEVER	1							
4	1	1N3790-32100	PLATE, MOUNTING	1							
5	1	1N3850-32150	WASHER, STOPPER	2							
6	1	1N3850-32160	SCREW, LOCK	1							
7	1	1N3790-32400	SUPPORT, FULCRUM	1							
8	1	1N3790-32450	FULCRUM, LEVER	1							
9	1	195385-35870	SPRING	2							
10	1	1C7100-48250	PLATE, FRICTION	2							
11	1	1E9170-64750	GRIP 13,SHIFT LEVER	1							
12	1	26014-060162	BOLT M 6X 16	1							
13	1	26014-080202	BOLT M 8X 20	2							
14	1	26014-080202	BOLT M 8X 20	1							
15	1	26051-080002	NUT M 8	3							
16	1	26717-060002	NUT M 6	2							
17	1	26717-100002	NUT M10	2							

Fig.14. CHANGE ROD

(A)=JS-1080HT-SPQ  
 (B)=  
 (C)=

(D)=  
 (E)=  
 (F)=



REF.	LEV.	PARTS NO.	DESCRIPTION	QTY						I	R	
				(A)	(B)	(C)	(D)	(E)	(F)			
1	1	1N3790-32300	CHANGE, WIRE	1								
2	1	22137-060000	WASHER 6, POLISHED	2								
3	1	22417-160100	COTTER PIN	2								

Fig.15. LEVER CHUTE

(A)=JS-1080HT-SPQ

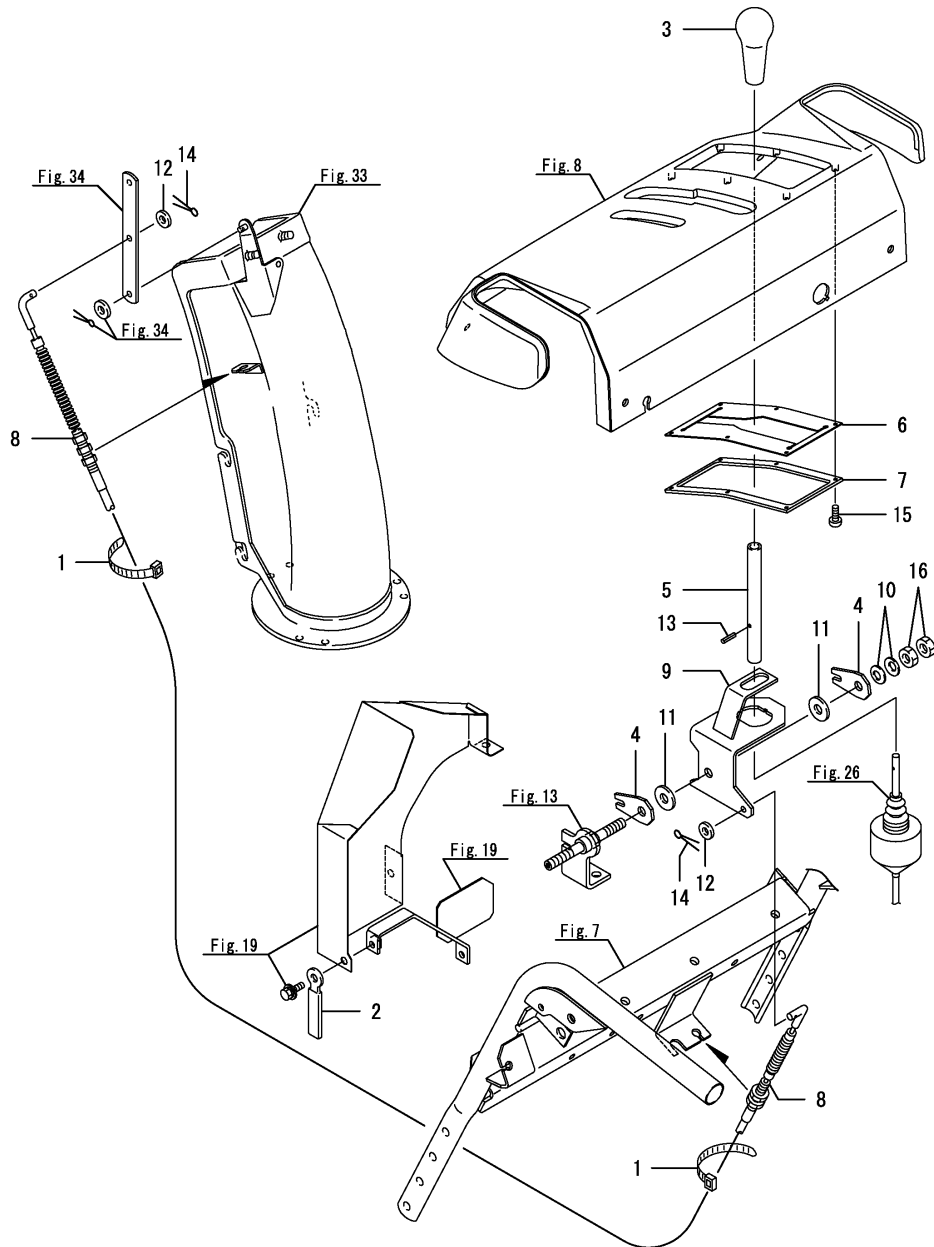
(B)=

(C)=

(D)=

(E)=

(F)=



REF.	LEV.	PARTS NO.	DESCRIPTION	QTY						I	R
				(A)	(B)	(C)	(D)	(E)	(F)		
1	1	1J3999-07000	BAND 100B	2							
2	1	1J3670-11390	CLAMP 8,WIRE	1							
3	1	1E4060-26430	GRIP	1							
4	1	1N3850-32150	WASHER, STOPPER	2							
5	1	1N3335-34100	LEVER, CHUTE E	1							
6	1	1N3860-34151	RUBBER, SLIDE	1							
7	1	1N3860-34160	RETAINER, RUBBER	1							
8	1	1N3790-34200	WIRE, CHUTE	1							
9	1	1N3860-34201	ARM, CHUTE	1							
10	1	195385-35870	SPRING	2							
11	1	1C7100-48250	PLATE, FRICTION	2							
12	1	22137-060000	WASHER 6, POLISHED	2							
13	1	22351-030012	SPRING PIN 3X12	1							
14	1	22417-200100	COTTER PIN 2.0X10	2							
15	1	22857-300080	SCREW 3X8	6							
16	1	26717-100002	NUT M10	2							

Fig.16. REFITTING

(A)=JS-1080HT-SPQ

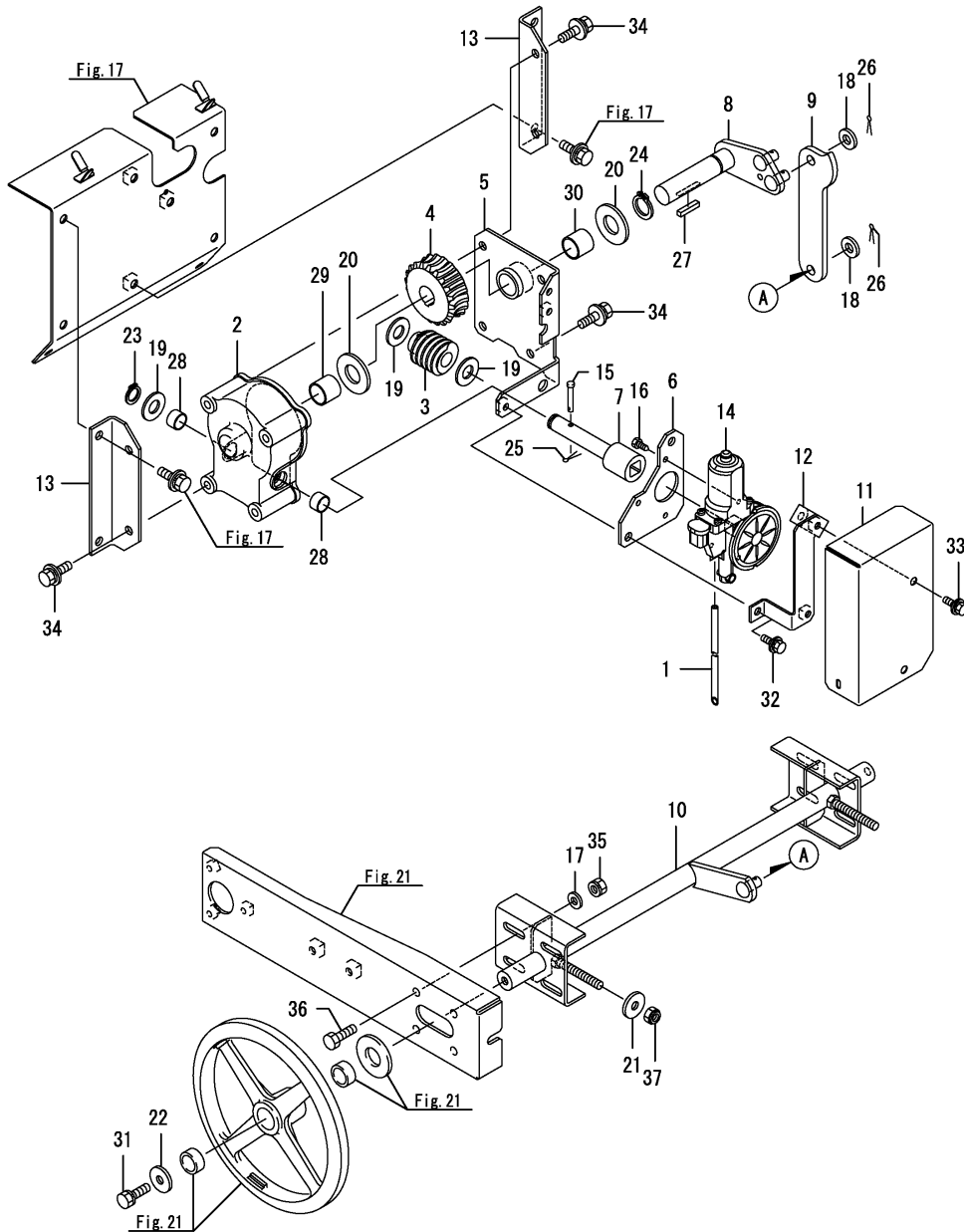
(B)=

(C)=

(D)=

(E)=

(F)=



REF.	LEV.	PARTS NO.	DESCRIPTION	QTY						I	R
				(A)	(B)	(C)	(D)	(E)	(F)		
1	1	1C1300-17250	PIPE, VINYL	1							
2	1	1N3790-35000	CASE, WORM GEAR	1							
3	1	1N3790-35010	GEAR, WORM	1							
4	1	1N3790-35020	WHEEL, WORM	1							
5	1	1N3790-35100	COVER, WORM CASE	1							
6	1	1N3790-35200	SEAT, MOTOR	1							
7	1	1N3790-35300	SHAFT, WORM	1							
8	1	1N3790-35400	SHAFT, DRIVE	1							
9	1	1N3790-35450	ARM, LIFT	1							
10	1	1N3790-35500	SHAFT, IDLER	1							
11	1	1N3790-35520	PLATE,	1							
12	1	1N3790-35530	STAY,	1							
13	1	1N3790-35600	PLATE, MOUNTING	2							
14	1	1N3790-35800	MOTOR,	1							
15	1	1N3280-73520	TINE PIN	1							
16	1	1N3280-73740	SCREW 5X14AEX.TAPPNG	3							
17	1	22137-080000	WASHER 8, POLISHED	8							
18	1	22137-100000	WASHER 10,POLISHED	2							
19	1	22137-140000	WASHER 14,POLISHED	3							
20	1	22137-200000	WASHER, 20	2							
21	1	22157-080000	WASHER 8	2							
22	1	22157-080000	WASHER 8	2							
23	1	22242-000150	CIRCLIP 15	1							
24	1	22242-000200	CIRCLIP 20	1							
25	1	22417-160100	COTTER PIN	1							
26	1	22417-200160	COTTER PIN 2.0X16	2							
27	1	22550-050250	KEY 5X25	1							
28	1	24550-015100	BUSH 15X10	2							
29	1	24550-020200	BUSH 20X20,DRY	1							
30	1	24550-020200	BUSH 20X20,DRY	1							
31	1	26013-080252	BOLT M 8X 25	2							
32	1	26014-060162	BOLT M 6X 16	2							
33	1	26014-060162	BOLT M 6X 16	2							
34	1	26014-080202	BOLT M 8X 20	6							
35	1	26051-080002	NUT M 8	8							
36	1	26116-080202	BOLT M 8X 20 PLATED	8							
37	1	26347-080002	U-NUT M 8	2							

Fig.17. CHASSIS FRAME

(A)=JS-1080HT-SPQ

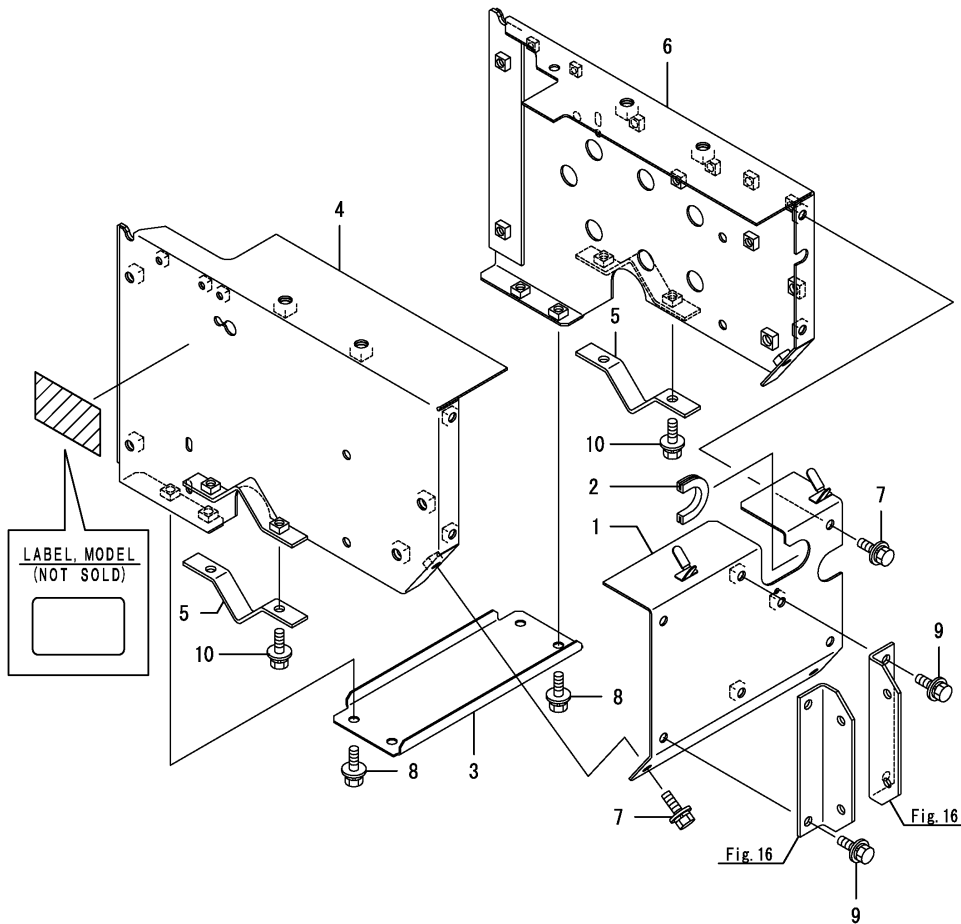
(B)=

(C)=

(D)=

(E)=

(F)=



REF.	LEV.	PARTS NO.	DESCRIPTION	Q'TY						I	R
				(A)	(B)	(C)	(D)	(E)	(F)		
1	1	1N3790-36100	CHASSIS, REAR	1							
2	1	1N3021-36130	GROMMET	1							
3	1	1N3790-36200	PLATE, BOTTOM	1							
4	1	1N3790-36500	CHASSIS, L	1							
5	1	1N3790-36560	PLATE, MOUNTING Z	2							
6	1	1N3790-36600	CHASSIS, R	1							
7	1	26014-080202	BOLT M 8X 20	4							
8	1	26014-080202	BOLT M 8X 20	4							
9	1	26014-080202	BOLT M 8X 20	4							
10	1	26014-080202	BOLT M 8X 20	4							

Fig.18. BRACKET

0CNP5-G50700 18. BRACKET

(A)=JS-1080HT-SPQ

(B)=

(C)=

(D)=

(E)=

(F)=

REF.	LEV.	PARTS NO.	DESCRIPTION	Q'TY						I	R
				(A)	(B)	(C)	(D)	(E)	(F)		
1	1	1J3999-02010	WASHER 6	4							
2	1	1N3790-36400	PLATE, MOUNTING	1							
3	1	26014-080202	BOLT M 8X 20	4							
4	1	26014-080202	BOLT M 8X 20	4							
5	1	26116-060252	BOLT 6X25	2							
6	1	26347-060002	U-NUT M 6	2							

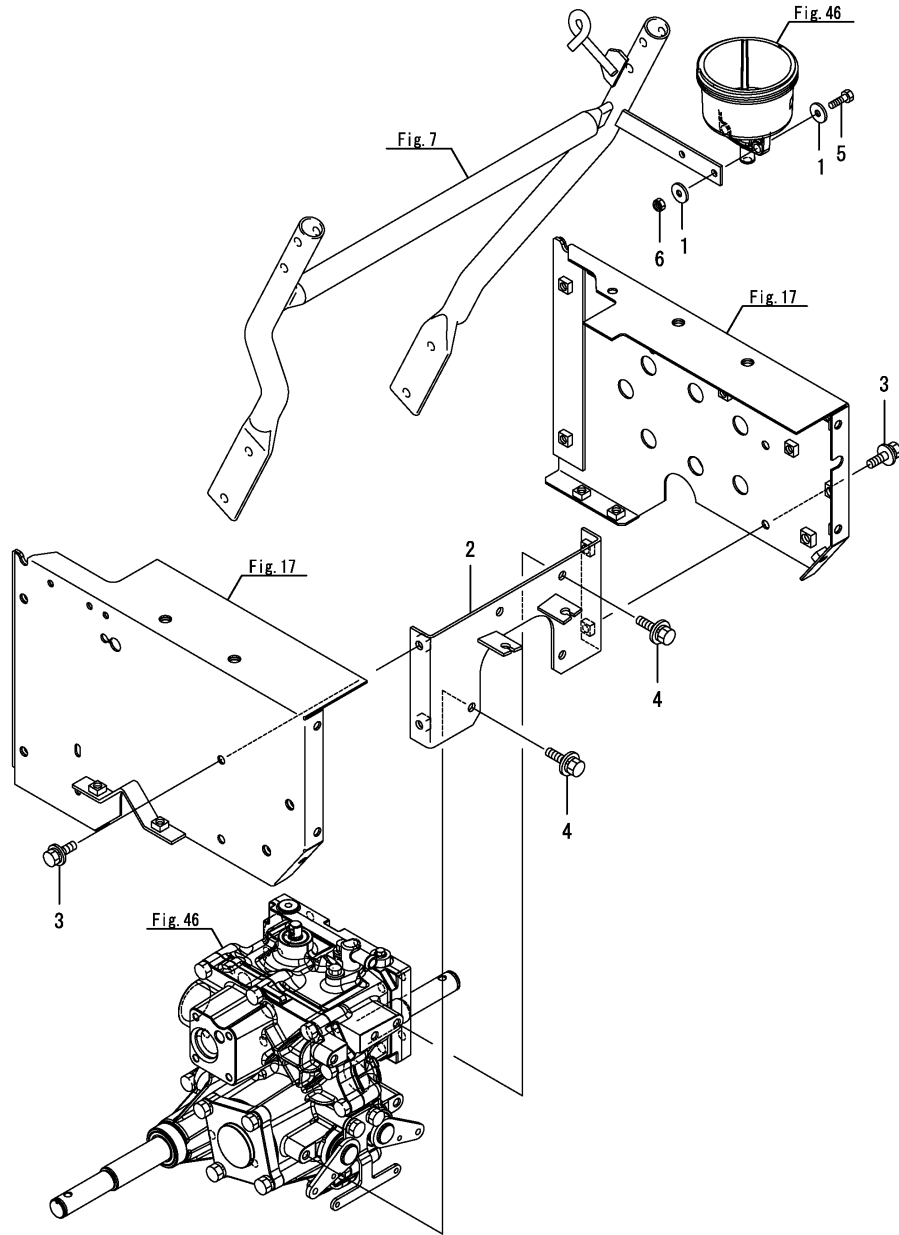


Fig.19. BELT COVER

(A)=JS-1080HT-SPQ

(B)=

(C)=

(D)=

(E)=

(F)=

REF.	LEV.	PARTS NO.	DESCRIPTION	QTY						I	R
				(A)	(B)	(C)	(D)	(E)	(F)		
1	1	7N3790-37100	COVER, BELT	1							
2	1	7N3790-37300	COVER,	1							
3	1	1N3790-37350	STAY, COVER	1							
4	1	26014-060162	BOLT M 6X 16	3							
5	1	26014-060162	BOLT M 6X 16	1							
6	1	26014-060162	BOLT M 6X 16	4							

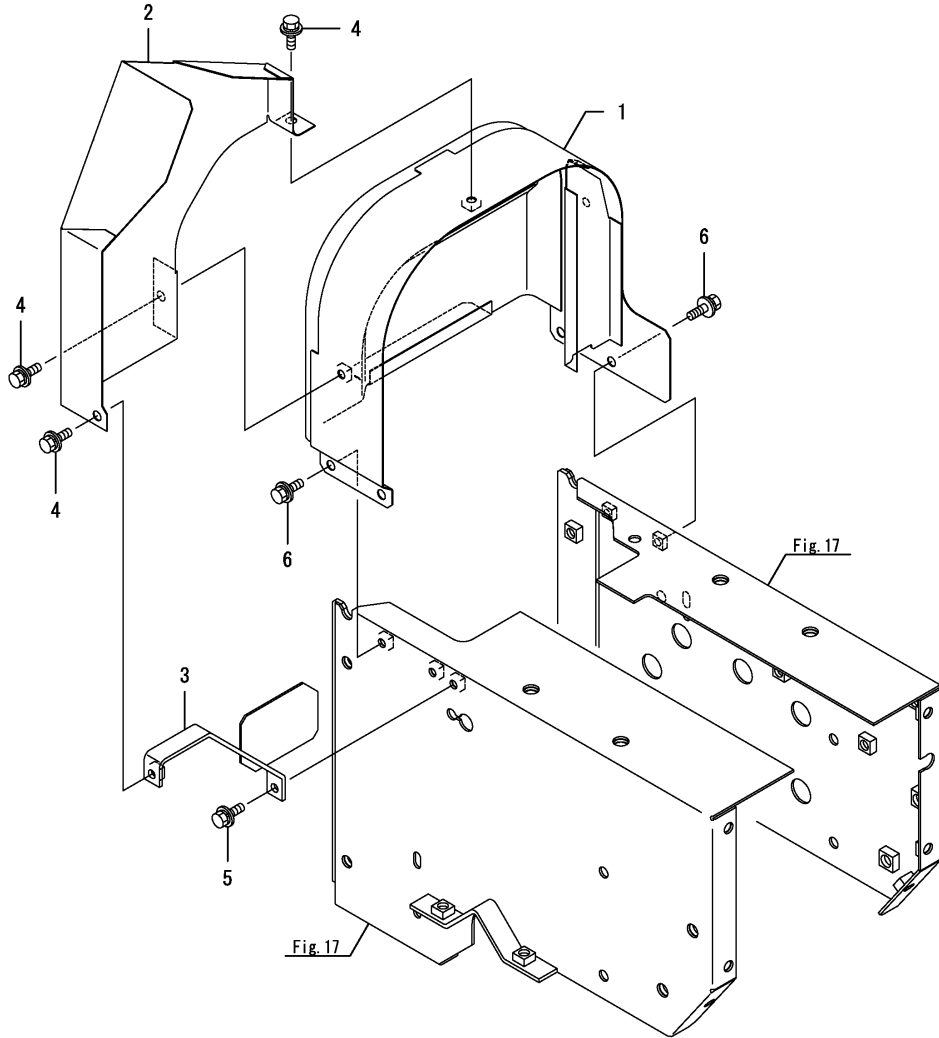


Fig.20. CRAWLER

(A)=JS-1080HT-SPQ

(B)=

(C)=

(D)=

(E)=

(F)=

REF.	LEV.	PARTS NO.	DESCRIPTION	Q'TY						I	R
				(A)	(B)	(C)	(D)	(E)	(F)		
1	1	1N1960-38000	CRAWLER	2							

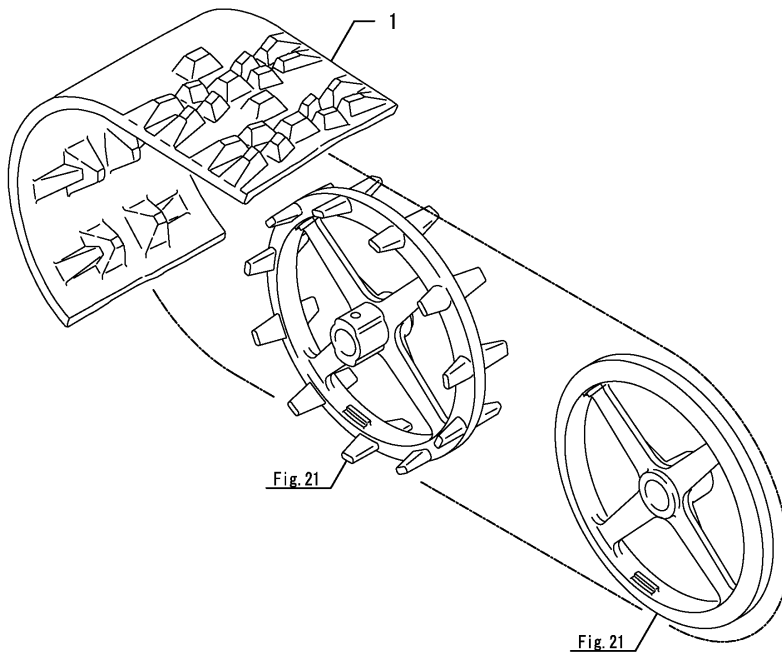




Fig.21. CRAWLER FRAME

0CNP5-G50700 21. CRAWLER FRAME

(A)=JS-1080HT-SPQ

(B)=

(C)=

(D)=

(E)=

(F)=

REF.	LEV.	PARTS NO.	DESCRIPTION	QTY						I	R
				(A)	(B)	(C)	(D)	(E)	(F)		
1	1	1N3300-25100	JOINT 6004	2							
2	1	1N3021-38101	PIN,AXLE	2							
3	1	1N3790-38150	COLLAR, 26X32X72	2							
4	1	1N3790-38170	WASHER, 25X40X2	2							
5	1	1N3390-38200-1	FRAME,CRAWLER	2							
6	1	1N3021-38500-1	SPROCKET 11	2							
7	1	1N3021-38600-1	WHEEL	2							
8	1	22137-200000	WASHER, 20	2							
9	1	22292-000200	CIRCLIP S-20	2							
10	1	22417-200120	COTTER PIN 2.0X12	2							
11	1	24104-060044	BALL BEARING	2							
12	1	24550-020100	BUSH	4							
13	1	26014-060162	BOLT M 6X 16	6							

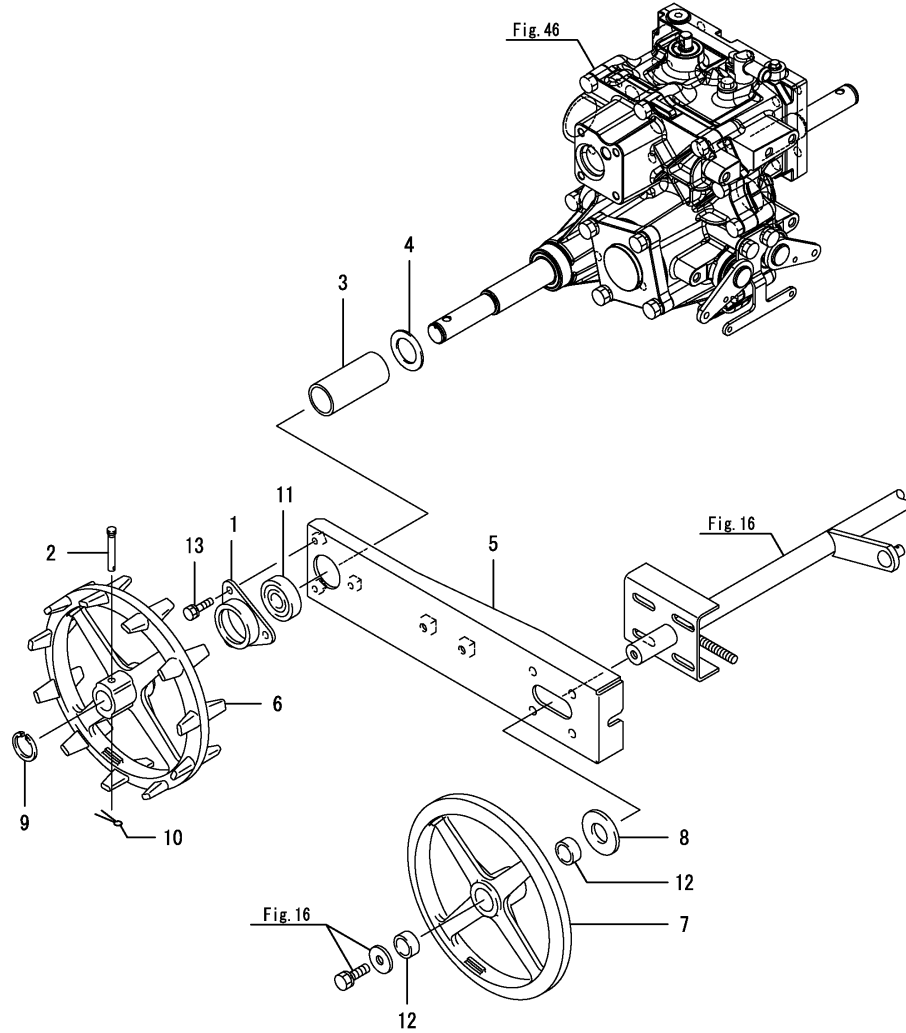


Fig.22. CRAWLER GUIDE

0CNP5-G50700 22. CRAWLER GUIDE

(A)=JS-1080HT-SPQ  
(B)=  
(C)=

(D)=  
(E)=  
(F)=

REF.	LEV.	PARTS NO.	DESCRIPTION	Q'TY						I	R
				(A)	(B)	(C)	(D)	(E)	(F)		
1	1	1N3790-38500	GUIDE, CRAWLER	2							
2	1	26014-080202	BOLT M 8X 20	4							

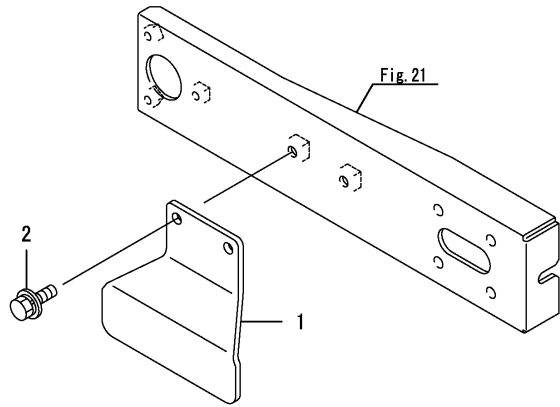


Fig.23. BATTERY

(A)=JS-1080HT-SPQ

(B)=

(C)=

(D)=

(E)=

(F)=

REF.	LEV.	PARTS NO.	DESCRIPTION	QTY						I	R
				(A)	(B)	(C)	(D)	(E)	(F)		
1	1	1N3300-51010	BATTERY YB12AL-A	1							
2	1	1N3360-51100	COVER,BATTERY	1							
3	1	1N3850-51100	GUIDE, BATTERY	1							
4	1	1N3360-51150-1	RETAINER, BATTERY	1							
5	1	1N3360-51170	RUBBER,KEEP,BATTERY	2							
6	1	1N3360-51200	SHAFT,KEEP,BATTERY	2							
7	1	1N3790-51210	PLATE, BATTERY	1							
8	1	1N3850-51300	CABLE, PLUS	1							
9	1	1N1710-51350	PIPE,VINYL	1							
10	1	1N3850-51350	CABLE, MINUS	1							
11	1	22157-060000	WASHER 6	2							
12	1	26014-060162	BOLT M 6X 16	1							
13	1	26014-080202	BOLT M 8X 20	3							
14	1	26051-080002	NUT M 8	1							
15	1	26347-060002	U-NUT M 6	2							
16	1	26717-060002	NUT M 6	4							

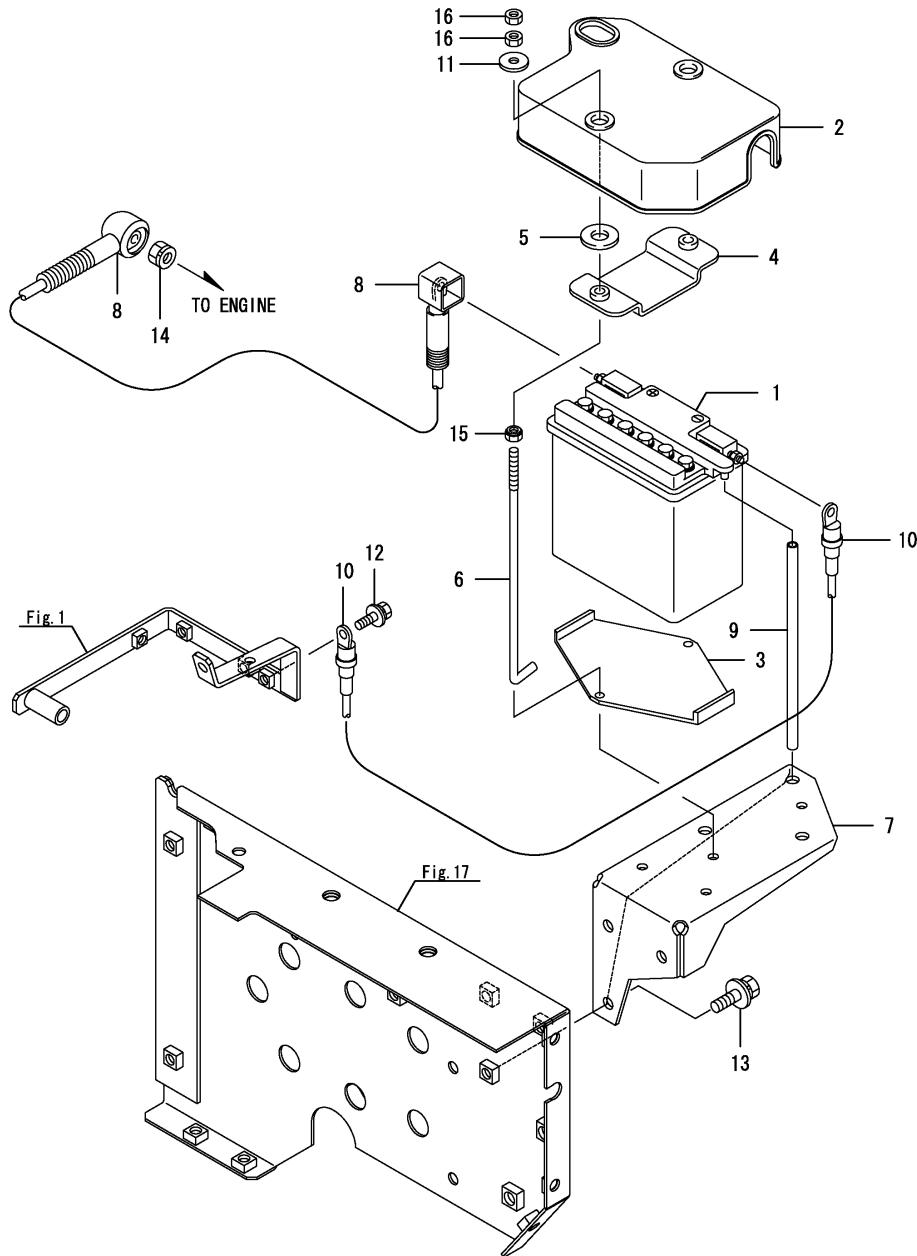


Fig.24. HARNESS

(A)=JS-1080HT-SPQ

(B)=

(C)=

(D)=

(E)=

(F)=

REF.	LEV.	PARTS NO.	DESCRIPTION	QTY						I	R
				(A)	(B)	(C)	(D)	(E)	(F)		
1	1	1N3790-51400	HARNESS ASSY, HREL	1							
2	2	1N3790-91500	MARK, FUSE 15A	1							
3	2	1N3790-91510	MARK, FUSE 20A	1							
4	1	1E8775-84120	BAND CLAMP	1							
5	1	1E8980-84900	CLIP 120T26,HARNESS	1							
6	1	1E6102-84960	BAND 250,WIRE LOCK	3							
7	1	1E6102-84970	BAND 140,WIRE LOCK	3							
8	1	26014-060252	BOLT M 6X 25	2							

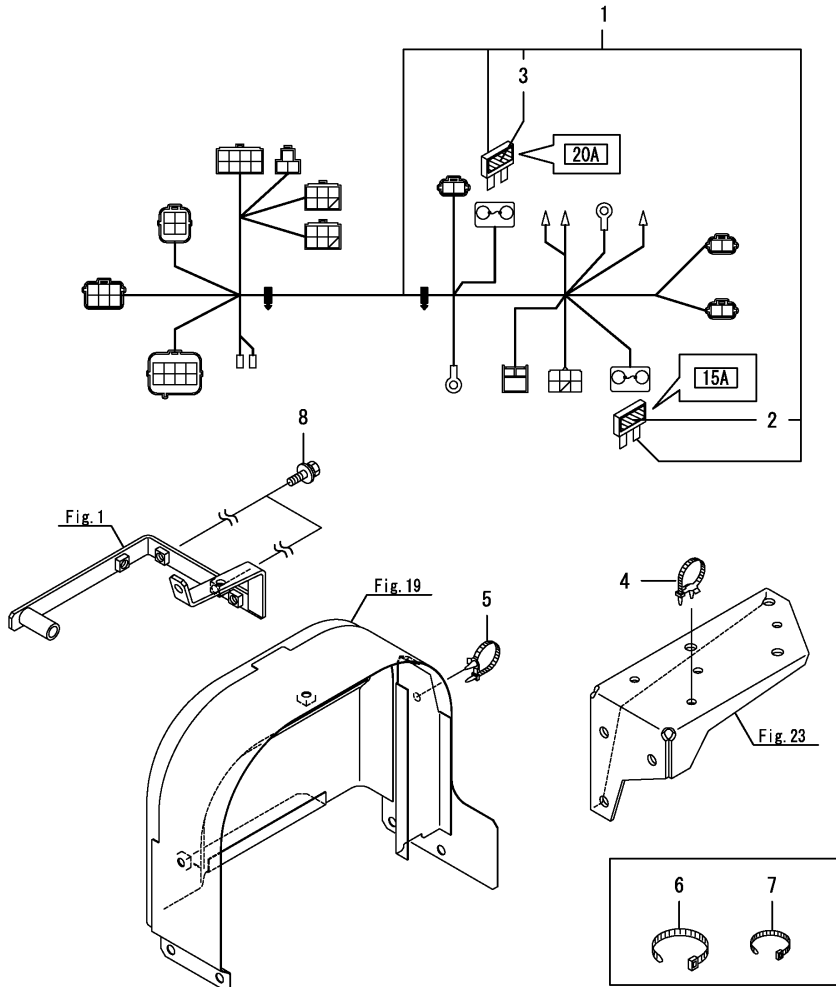


Fig.25. SWITCH

0CNP5-G50700 25. SWITCH

(A)=JS-1080HT-SPQ  
(B)=  
(C)=

(D)=  
(E)=  
(F)=

REF.	LEV.	PARTS NO.	DESCRIPTION	Q'TY						I	R
				(A)	(B)	(C)	(D)	(E)	(F)		
1	1	1N3021-52300	SWITCH ASSY.,KEY	1							

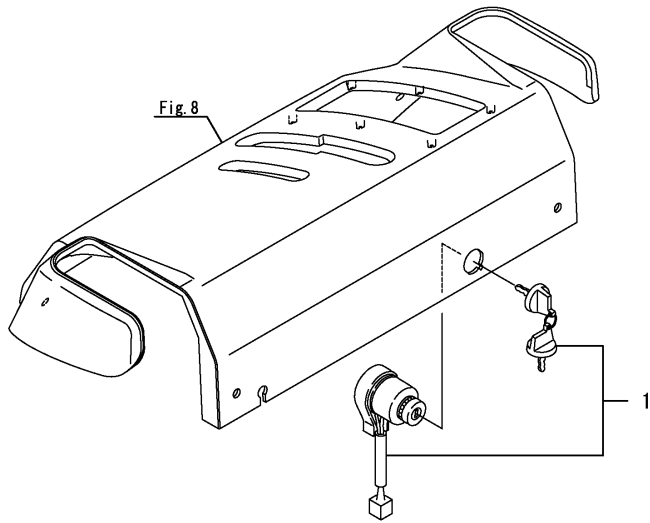


Fig.26. SWITCH(E)

(A)=JS-1080HT-SPQ

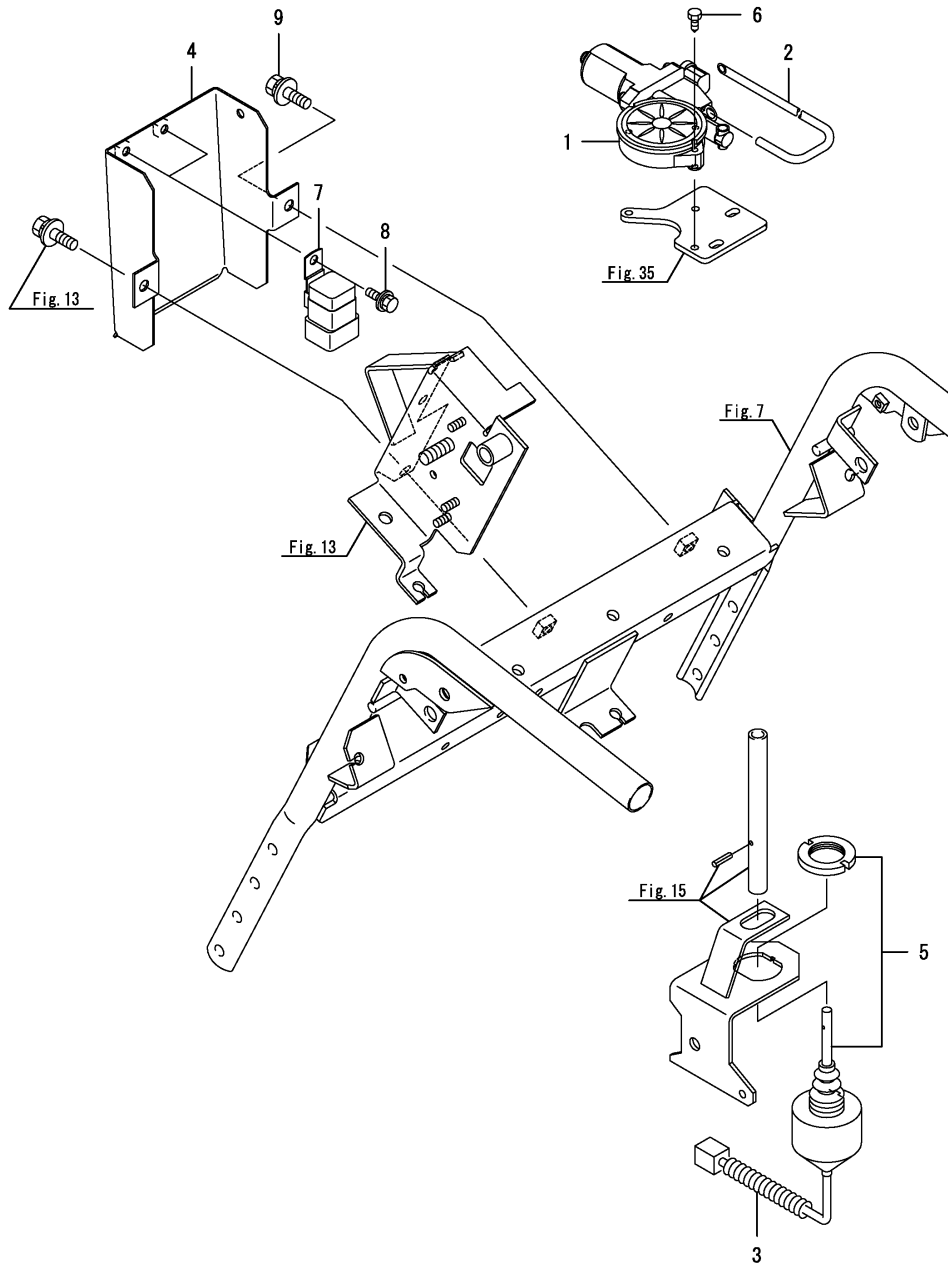
(B)=

(C)=

(D)=

(E)=

(F)=



REF.	LEV.	PARTS NO.	DESCRIPTION	QTY						I	R
				(A)	(B)	(C)	(D)	(E)	(F)		
1	1	1C1300-17300	MOTOR, GS34(7T	1							
2	1	1N3790-35850	HOSE, VINYL	1							
3	1	1N1723-51280	TUBE, 80	1							
4	1	1N3790-51500	COVER, RELAY	1							
5	1	1N1723-52101	SWITCH, LEVER	1							
6	1	1N3280-73740	SCREW 5X14AEX.TAPPNG	3							
7	1	1E6650-82300	RELAY A-2	2							
8	1	26014-060162	BOLT M 6X 16	2							
9	1	26014-080162	BOLT M 8X 16	1							

Fig.27. SWITCH(REL

0CNP5-G50700 27. SWITCH(REL

(A)=JS-1080HT-SPQ  
(B)=  
(C)=

(D)=  
(E)=  
(F)=

REF.	LEV.	PARTS NO.	DESCRIPTION	Q'TY						I	R
				(A)	(B)	(C)	(D)	(E)	(F)		
1	1	1N3280-55100	RELAY UNIT	1							
2	1	1E8775-81400	SWITCH	1							
3	1	22157-060000	WASHER 6	1							
4	1	26013-060202	BOLT M 6X 20	1							
5	1	26717-060002	NUT M 6	1							

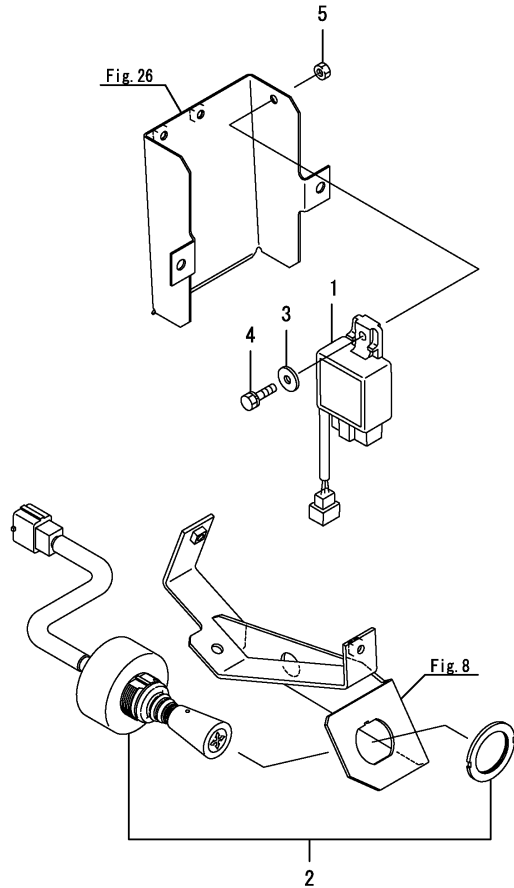


Fig.28. LAMPS

(A)=JS-1080HT-SPQ

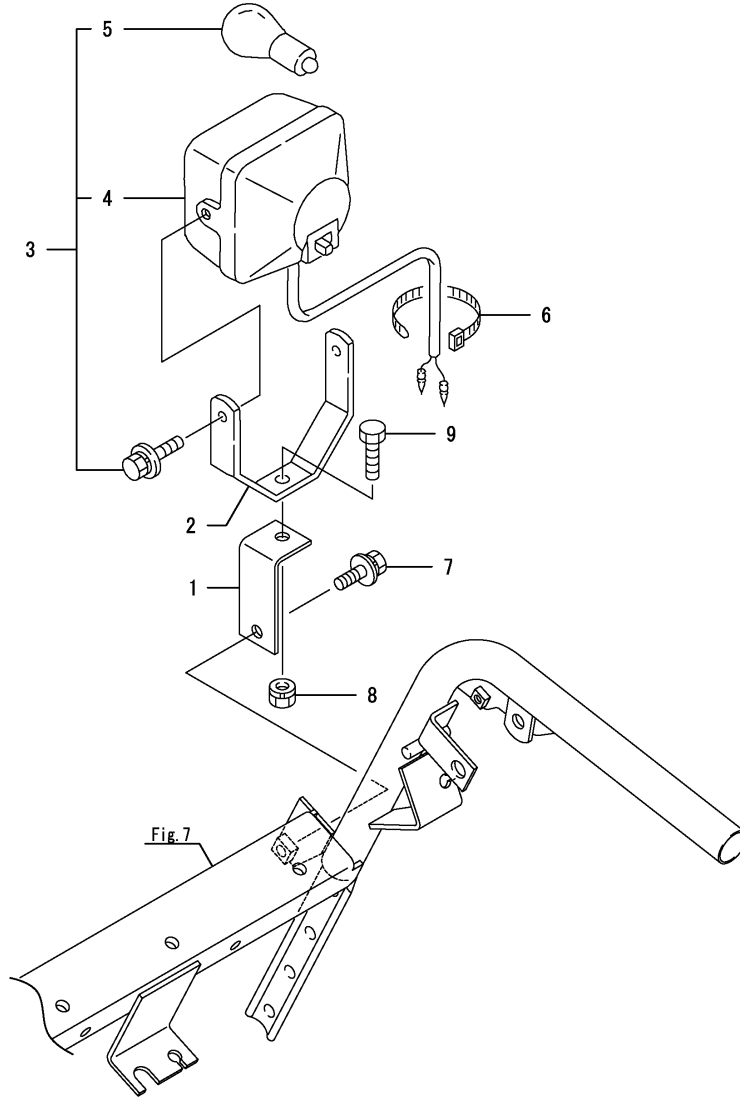
(B)=

(C)=

(D)=

(E)=

(F)=



REF.	LEV.	PARTS NO.	DESCRIPTION	Q'TY						I	R
				(A)	(B)	(C)	(D)	(E)	(F)		
1	1	1N3860-34250	SEAT, LIGHT	1							
2	1	1N1711-51390	STAY,HEADLIGHT	1							
3	1	1N1711-51850	HEADLIGHT COMPL.	1							
4	2	1N1711-51380	BODY ASSY, LIGHT	1							
5	2	1N1711-51860	LAMP 12V-15W G23	1							
6	1	1E8775-84120	BAND CLAMP	1							
7	1	26014-080202	BOLT M 8X 20	1							
8	1	26051-080002	NUT M 8	1							
9	1	26117-080162	BOLT M 8X 16 PLATED	1							



Fig.29. AUGER FRAME

(A)=JS-1080HT-SPQ

(B)=

(C)=

(D)=

(E)=

(F)=

REF.	LEV.	PARTS NO.	DESCRIPTION	QTY						I	R
				(A)	(B)	(C)	(D)	(E)	(F)		
1	1	1N1570-38210	BEARING 6203B	1							
2	1	1N3790-71000	FRAME, WORK	1							
3	1	1N1710-71062-2	STOPPER	2							
4	1	1N1710-71072	ROD, SNOW SHOVELING	1							
5	1	1N3300-71401-1	SHOE	2							
6	1	22137-080000	WASHER 8, POLISHED	8							
7	1	24104-062034	BALL BEARING	1							
8	1	26014-080202	BOLT M 8X 20	4							
9	1	26051-060002	NUT M 6	2							
10	1	26051-080002	NUT M 8	3							
11	1	26051-080002	NUT M 8	4							
12	1	26116-060122	BOLT 6X12	2							
13	1	26116-080202	BOLT M 8X 20 PLATED	4							

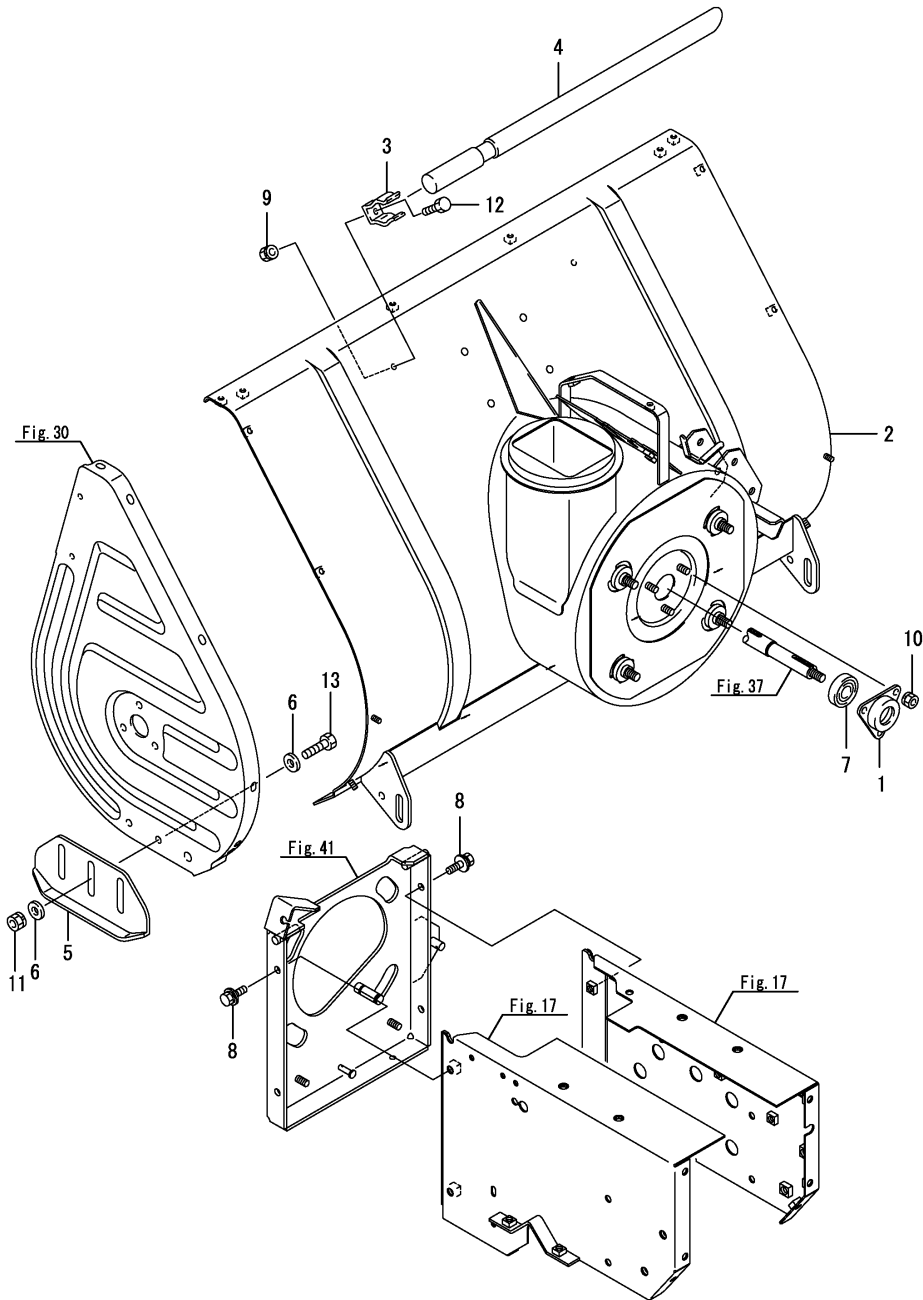


Fig.30. AUGER PLATE

0CNP5-G50700 30. AUGER PLATE

(A)=JS-1080HT-SPQ

(B)=

(C)=

(D)=

(E)=

(F)=

REF.	LEV.	PARTS NO.	DESCRIPTION	Q'TY						I	R
				(A)	(B)	(C)	(D)	(E)	(F)		
1	1	1N1570-38200	BEARING 6203C	2							
2	1	1N3370-71300	PLATE L,AUGER SIDE	1							
3	1	1N3370-71350	PLATE R,AUGER SIDE	1							
4	1	22137-060000	WASHER 6, POLISHED	4							
5	1	24104-062034	BALL BEARING	2							
6	1	26014-060122	BOLT M 6X 12	6							
7	1	26014-080162	BOLT M 8X 16	6							
8	1	26051-060002	NUT M 6	4							

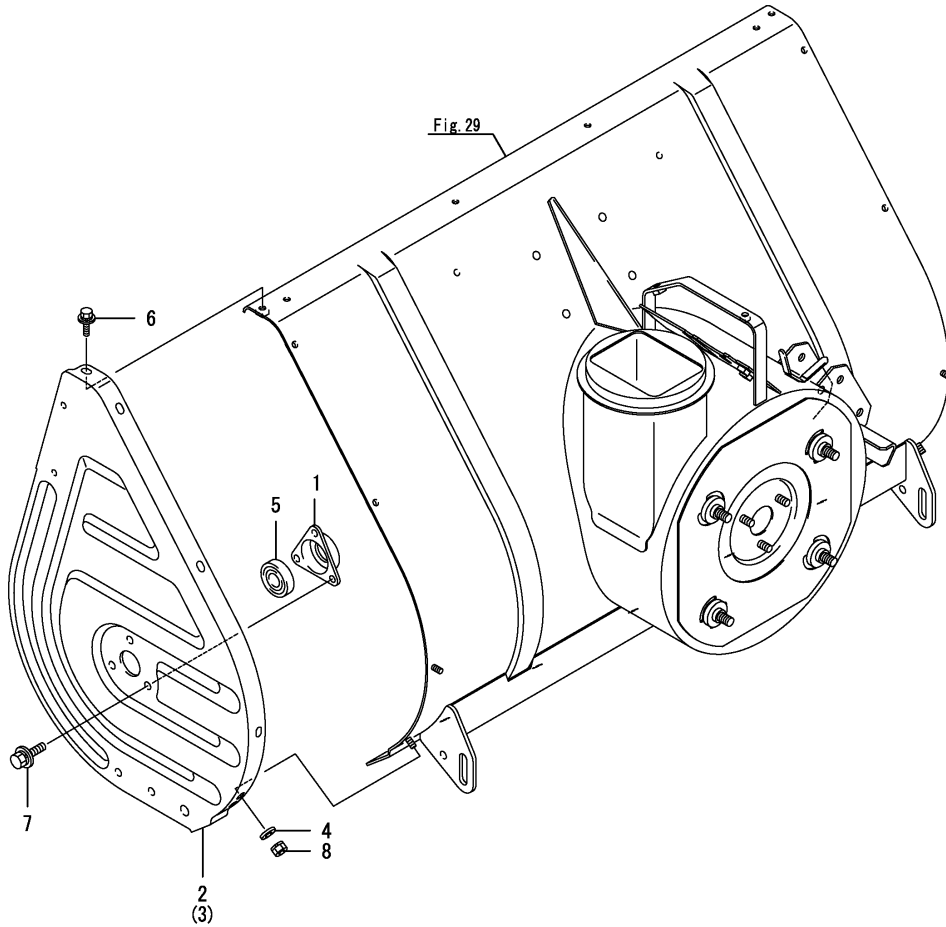


Fig.31. AUGER COVER

0CNP5-G50700 31. AUGER COVER

(A)=JS-1080HT-SPQ

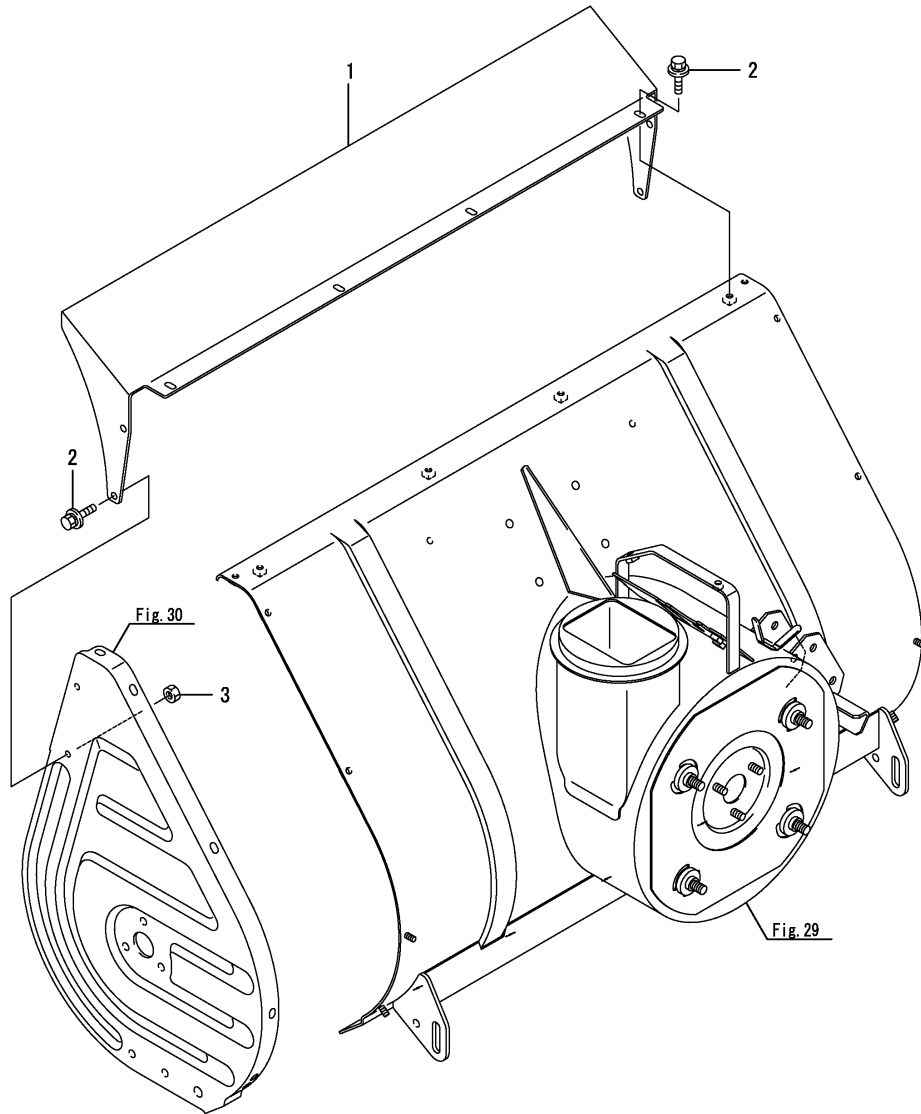
(B)=

(C)=

(D)=

(E)=

(F)=



REF.	LEV.	PARTS NO.	DESCRIPTION	Q'TY						I	R	
				(A)	(B)	(C)	(D)	(E)	(F)			
1	1	7N3790-71500	COVER, AUGER CASE	1								
2	1	26014-060122	BOLT M 6X 12	8								
3	1	26717-060002	NUT M 6	4								

---

---

---

---

---

---

---

---

---

---

---

---

---

---

---

---

---

---

---

---

---

---

---

Fig.32. AUGER BOTTOM

0CNP5-G50700 32. AUGER BOTTOM

(A)=JS-1080HT-SPQ

(B)=

(C)=

(D)=

(E)=

(F)=

REF.	LEV.	PARTS NO.	DESCRIPTION	Q'TY						I	R
				(A)	(B)	(C)	(D)	(E)	(F)		
1	1	1N3020-71301-1	PLATE,BOTTOM(800	1							
2	1	1N3300-71320	BOLT	5							
3	1	1N3300-71330	BOLT	2							
4	1	22137-060000	WASHER 6, POLISHED	5							
5	1	22157-080000	WASHER 8	2							
6	1	26051-060002	NUT M 6	5							
7	1	26051-080002	NUT M 8	2							

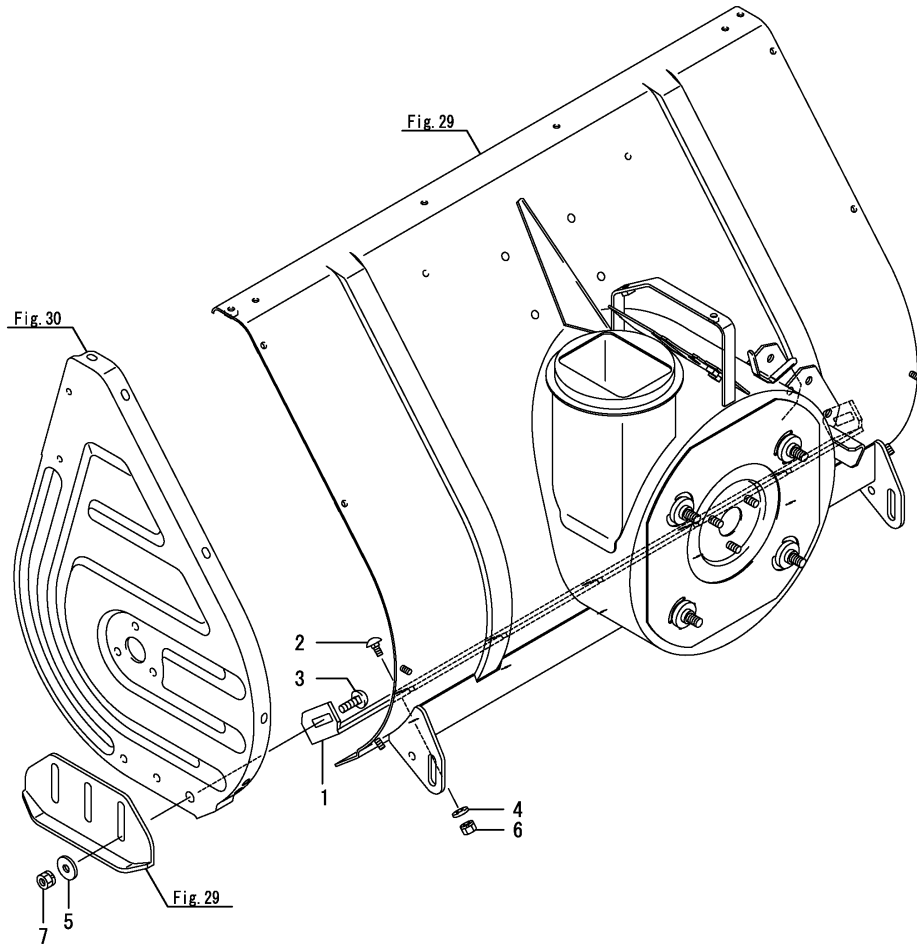


Fig.33. CHUTE

(A)=JS-1080HT-SPQ

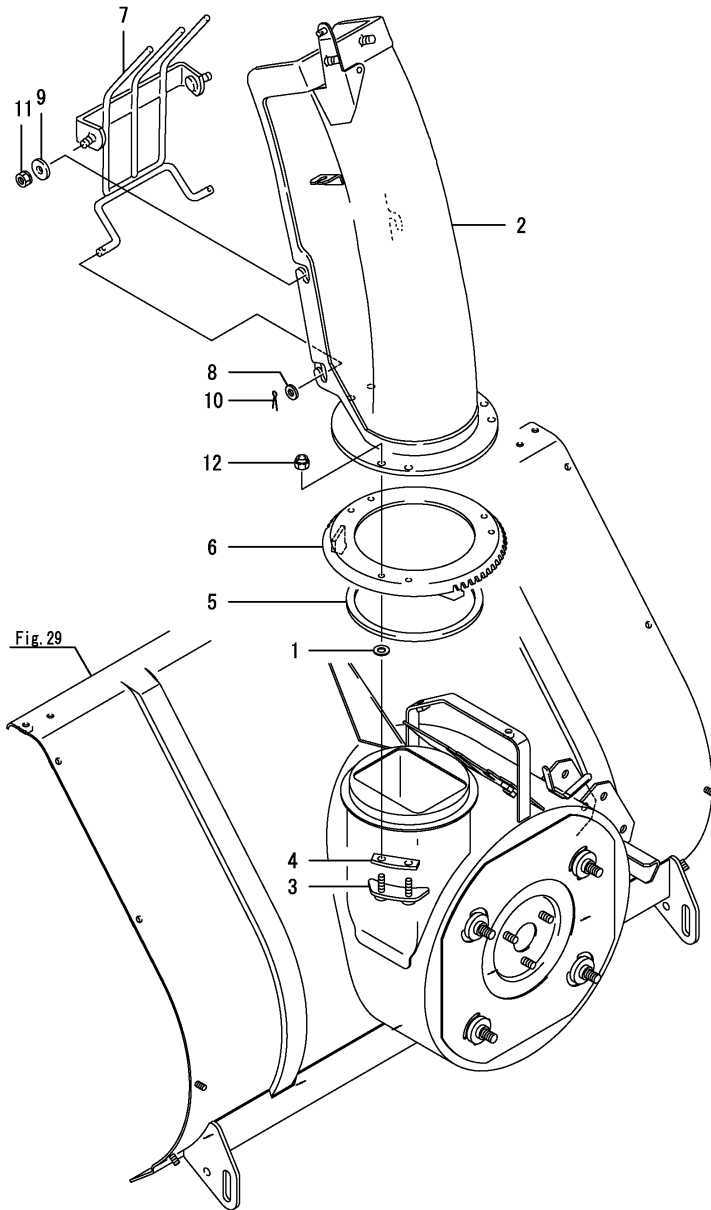
(B)=

(C)=

(D)=

(E)=

(F)=



REF.	LEV.	PARTS NO.	DESCRIPTION	Q'TY						I	R
				(A)	(B)	(C)	(D)	(E)	(F)		
1	1	1J3999-02160	WASHER	6							
2	1	7N3790-73100	CHUTE,	1							
3	1	1N3021-73201	FIXTURE A,SHOOTER	3							
4	1	1N1711-73240	SPACER	3							
5	1	1N1711-73280	PLATE,FLOOR	1							
6	1	1N3260-73400	GEAR, CHUTE E	1							
7	1	1N1960-73502	GUARD	1							
8	1	22137-060000	WASHER 6, POLISHED	2							
9	1	22157-060000	WASHER 6	2							
10	1	22417-200120	COTTER PIN 2.0X12	2							
11	1	26051-060002	NUT M 6	2							
12	1	26347-060002	U-NUT M 6	6							

Fig.34. DEFLECTOR

0CNP5-G50700 34. DEFLECTOR

(A)=JS-1080HT-SPQ

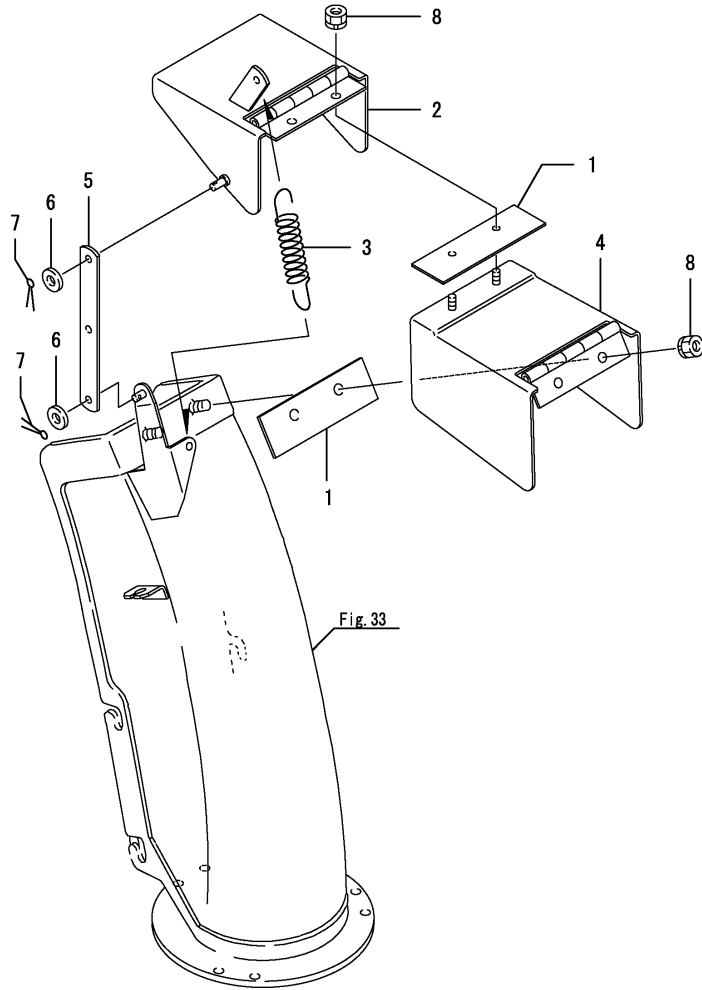
(B)=

(C)=

(D)=

(E)=

(F)=



REF.	LEV.	PARTS NO.	DESCRIPTION	QTY						I	R
				(A)	(B)	(C)	(D)	(E)	(F)		
1	1	1N1711-73170	RUBBER,SNOW PROTECT.	2							
2	1	1N3850-73200	DEFLECTOR, SUB	1							
3	1	1N3850-73250	SPRING, 18X106	1							
4	1	1N3850-73300	DEFLECTOR,	1							
5	1	1N3850-73400	ARM, DEFLECTOR	1							
6	1	22137-060000	WASHER 6, POLISHED	2							
7	1	22417-160100	COTTER PIN	2							
8	1	26051-060002	NUT M 6	4							

Fig.35. ROTATION

(A)=JS-1080HT-SPQ

(B)=

(C)=

(D)=

(E)=

(F)=

REF.	LEV.	PARTS NO.	DESCRIPTION	QTY						I	R
				(A)	(B)	(C)	(D)	(E)	(F)		
1	1	1N3790-73350	SEAT, CHUTE MOTOR	1							
2	1	1N3790-73450	COVER, MOTOR	1							
3	1	1N3790-73500	STAY, COVER	1							
4	1	26014-060162	BOLT M 6X 16	2							
5	1	26014-060162	BOLT M 6X 16	1							
6	1	26014-060162	BOLT M 6X 16	3							
7	1	22137-060000	WASHER 6, POLISHED	1							

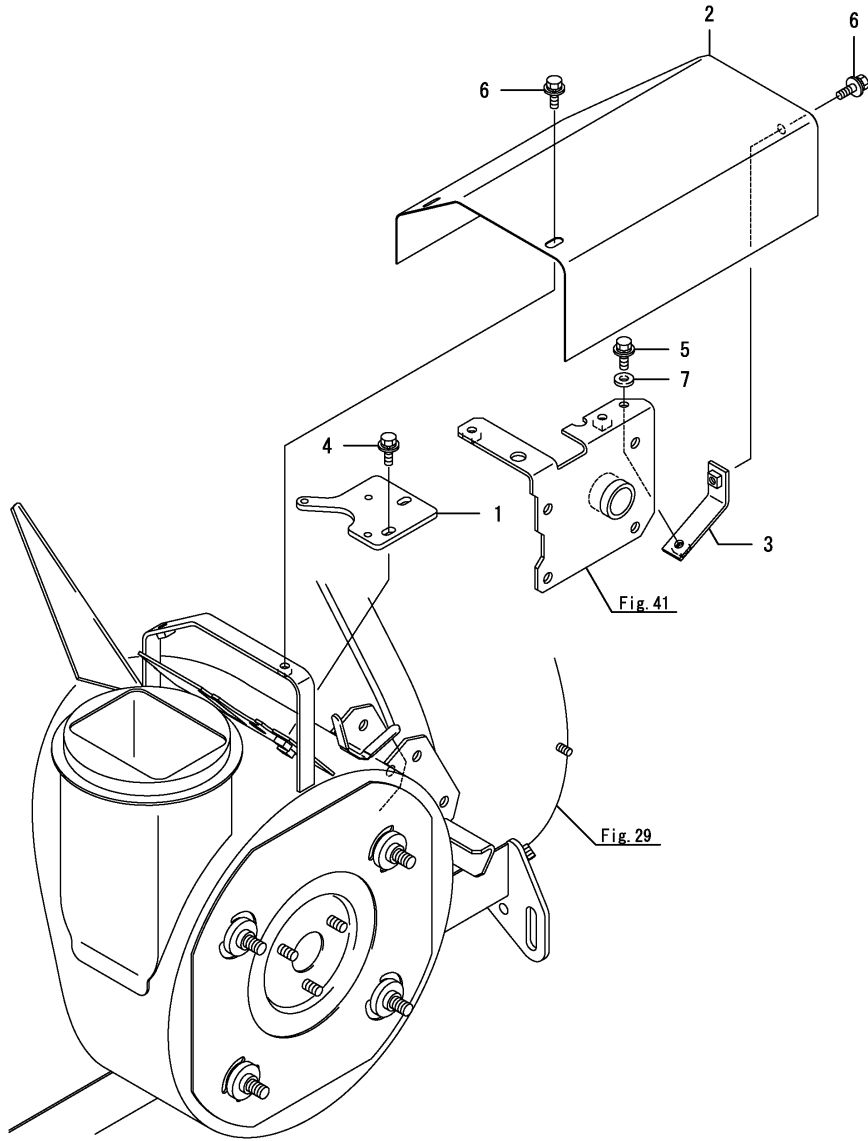


Fig.36. GEAR CASE

(A)=JS-1080HT-SPQ

(B)=

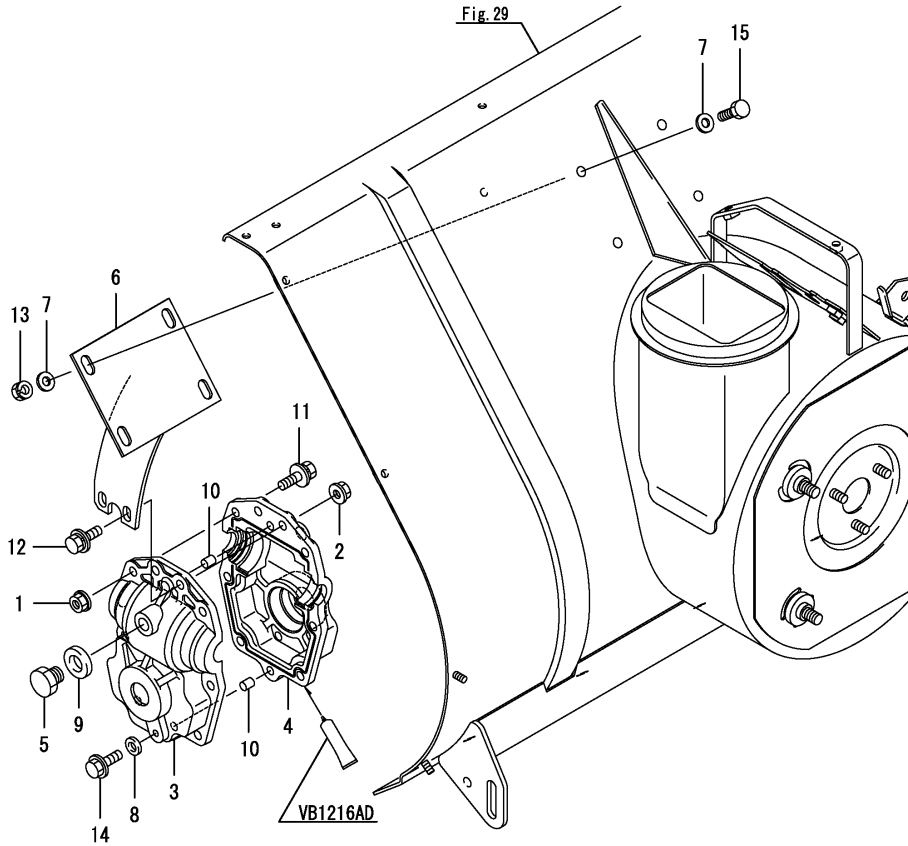
(C)=

(D)=

(E)=

(F)=

REF.	LEV.	PARTS NO.	DESCRIPTION	QTY						I	R
				(A)	(B)	(C)	(D)	(E)	(F)		
1	1	194990-22140	NUT W/WASHER 8	6							
2	1	194990-22140	NUT W/WASHER 8	2							
3	1	1N3790-74000	CASE L, GEAR	1							
4	1	1N3790-74010	CASE R, GEAR	1							
5	1	1N3021-74130	BOLT M14,DRAIN	1							
6	1	1N3790-74200	FIXTURE, GEAR CASE	1							
7	1	22137-080000	WASHER 8, POLISHED	8							
8	1	22190-080000	SEAL WASHER 8(BOLT)	1							
9	1	22190-140000	SEAL WASHER 14(BOLT)	1							
10	1	22312-080100	PARALLEL PIN, M8X10	2							
11	1	26014-080302	BOLT M 8X 30	6							
12	1	26014-080352	BOLT M 8X 35	2							
13	1	26051-080002	NUT M 8	4							
14	1	26107-080162	BOLT,8X 16	1							
15	1	26116-080202	BOLT M 8X 20 PLATED	4							

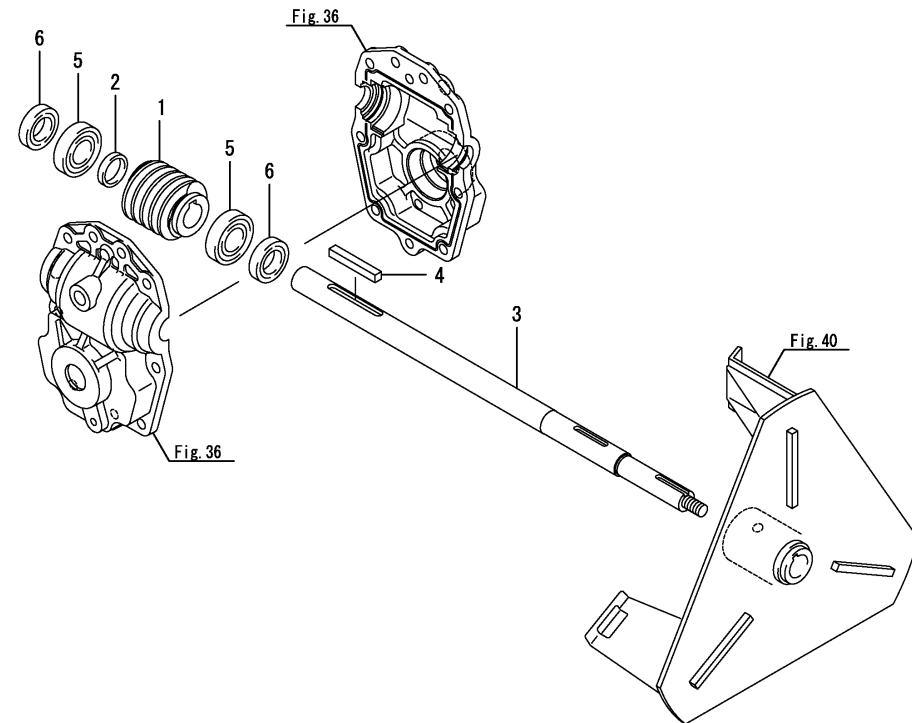




# Fig.37. BLOWER SHAFT

(A)=JS-1080HT-SPQ  
(B)=  
(C)=

(D)=  
(E)=  
(F)=



REF.	LEV.	PARTS NO.	DESCRIPTION	Q'TY						I	R
				(A)	(B)	(C)	(D)	(E)	(F)		
1	1	1N3021-74030	WORM 3L2	1							
2	1	1N3790-74080	COLLAR, 21X27X5	1							
3	1	1N3790-74100	SHAFT, BLOWER	1							
4	1	22550-070500	KEY 7X50	1							
5	1	24101-060044	BALL BEARING #6004	2							
6	1	24421-203508	SEAL, OIL	2							

Fig.38. AUGER SHAFT

0CNP5-G50700 38. AUGER SHAFT

(A)=JS-1080HT-SPQ

(B)=

(C)=

(D)=

(E)=

(F)=

REF.	LEV.	PARTS NO.	DESCRIPTION	QTY						I	R	
				(A)	(B)	(C)	(D)	(E)	(F)			
1	1	1N3370-74040	WHEEL 3X20,WORM	1								
2	1	1N3410-74200	SHAFT,AUGER 800	1								
3	1	22550-050300	KEY 5X30	1								
4	1	24101-060044	BALL BEARING #6004	2								
5	1	24421-203508	SEAL, OIL	2								

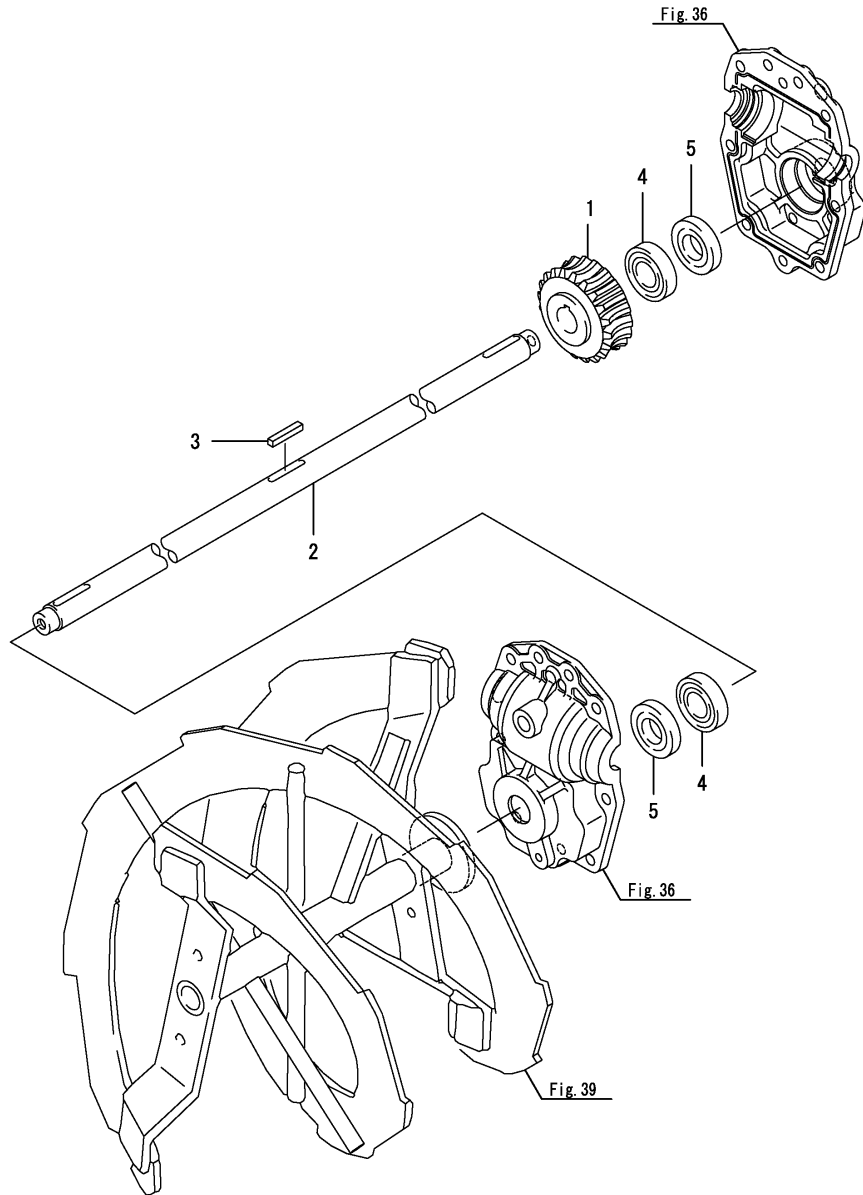


Fig.39. AUGER

(A)=JS-1080HT-SPQ

(B)=

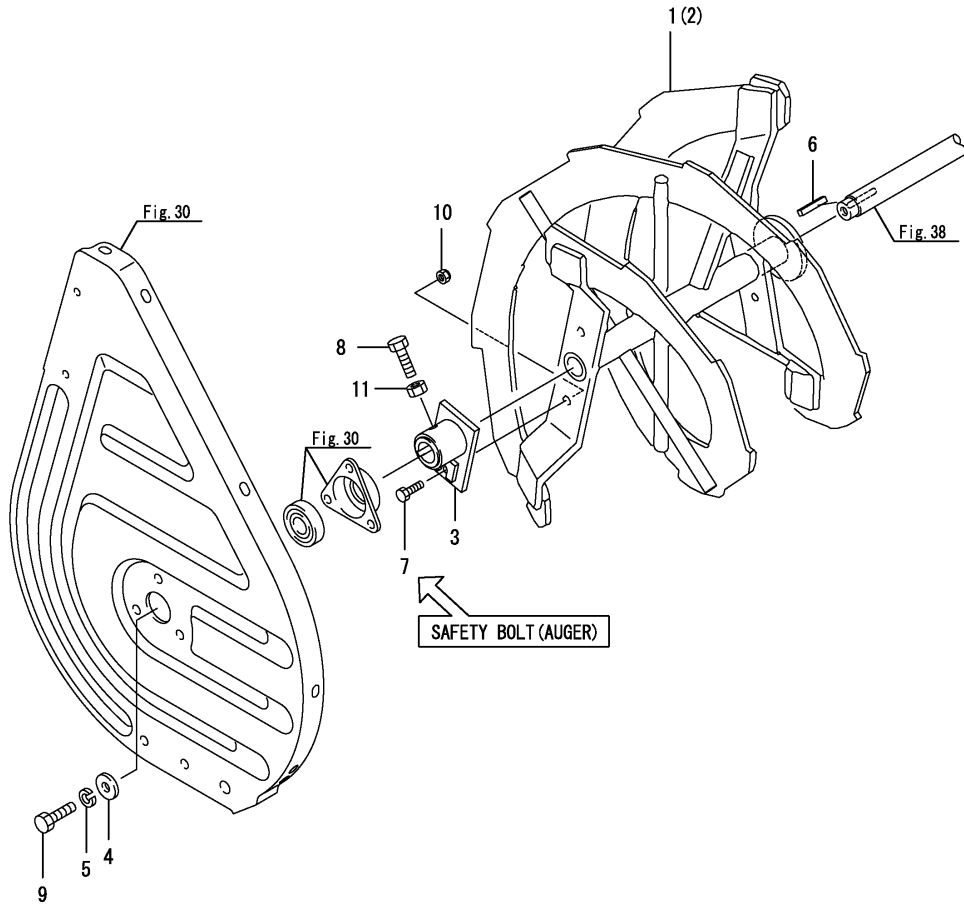
(C)=

(D)=

(E)=

(F)=

REF.	LEV.	PARTS NO.	DESCRIPTION	QTY						I	R
				(A)	(B)	(C)	(D)	(E)	(F)		
1	1	1N3420-75000-1	AUGER, L	1							
2	1	1N3420-75100-1	AUGER, R	1							
3	1	1N3330-75200-1	FLANGE,AUGER	2							
4	1	22157-080000	WASHER 8	2							
5	1	22217-080000	WASHER, 8	2							
6	1	22550-050300	KEY 5X30	2							
7	1	26116-060202	BOLT M 6X 20	2							
8	1	26116-080162	BOLT 8X16	2							
9	1	26116-080252	BOLT M 8X 25 PLATED	2							
10	1	26347-060002	U-NUT M 6	2							
11	1	26717-080002	NUT 8	2							



SAFETY BOLT (AUGER)

Fig.40. BLOWER

(A)=JS-1080HT-SPQ

(B)=

(C)=

(D)=

(E)=

(F)=

REF.	LEV.	PARTS NO.	DESCRIPTION	Q'TY						I	R
				(A)	(B)	(C)	(D)	(E)	(F)		
1	1	1N3370-76000-1	BLOWER ASSY	1							
2	1	22550-050300	KEY 5X30	1							
3	1	26116-080202	BOLT M 8X 20 PLATED	1							
4	1	26717-080002	NUT 8	1							

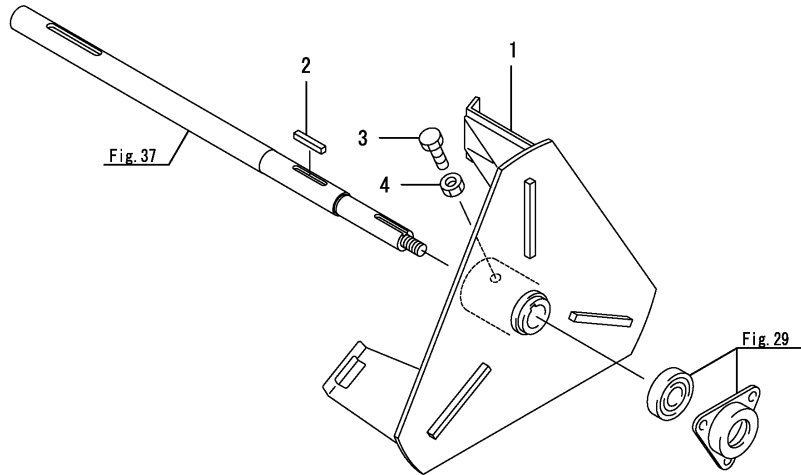


Fig.41. BRACKET

(A)=JS-1080HT-SPQ

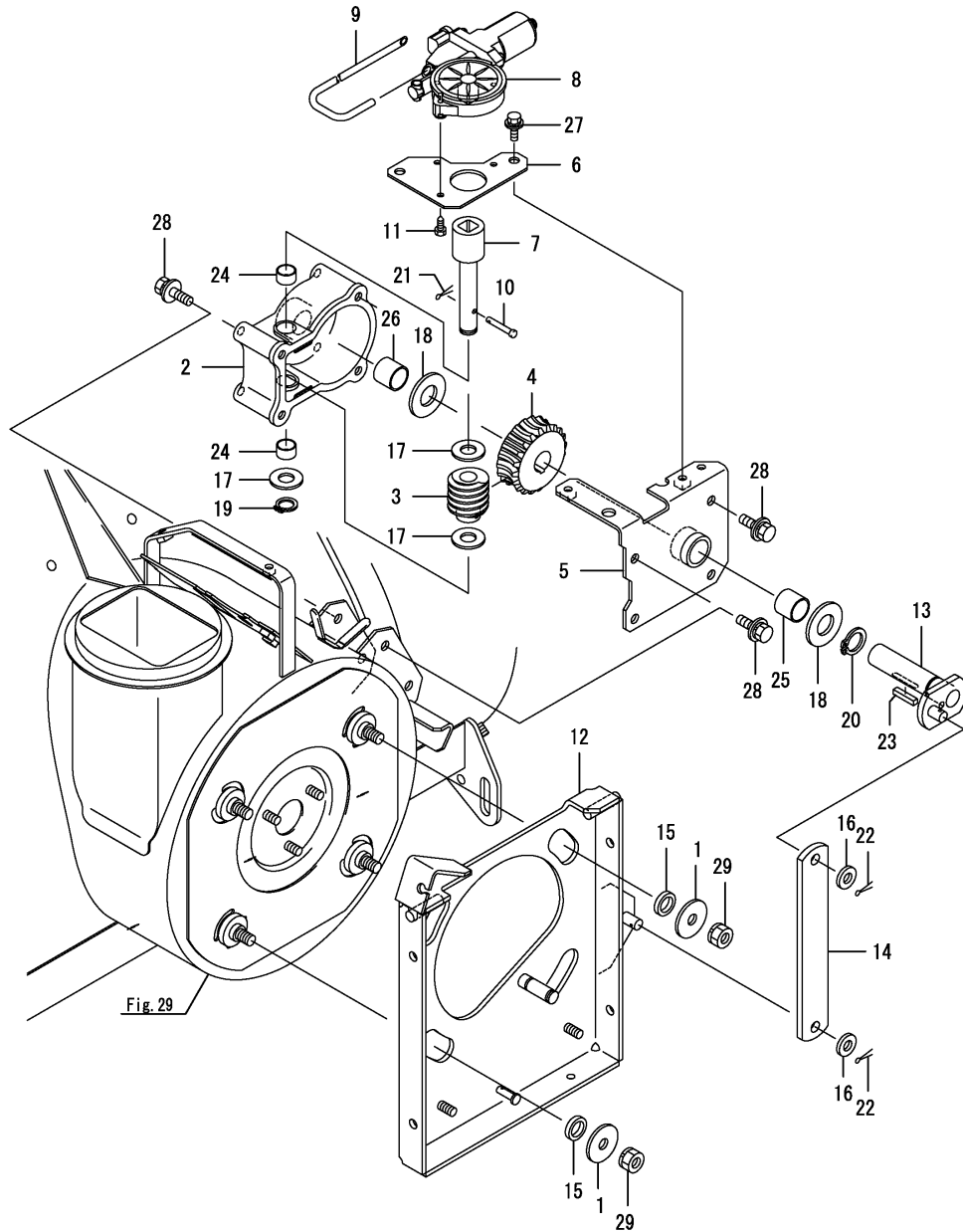
(B)=

(C)=

(D)=

(E)=

(F)=



REF.	LEV.	PARTS NO.	DESCRIPTION	QTY						I	R
				(A)	(B)	(C)	(D)	(E)	(F)		
1	1	1S7302-30370	WASHER, 36X10.5X3	4							
2	1	1N3790-35000	CASE, WORM GEAR	1							
3	1	1N3790-35010	GEAR, WORM	1							
4	1	1N3790-35020	WHEEL, WORM	1							
5	1	1N3790-35100	COVER, WORM CASE	1							
6	1	1N3790-35200	SEAT, MOTOR	1							
7	1	1N3790-35300	SHAFT, WORM	1							
8	1	1N3790-35800	MOTOR,	1							
9	1	1N3790-35850	HOSE, VINYL	1							
10	1	1N3280-73520	TINE PIN	1							
11	1	1N3280-73740	SCREW 5X14AEX.TAPPNG	3							
12	1	1N3790-79000	FRAME, ROLLING	1							
13	1	1N3790-79400	SHAFT, DRIVE	1							
14	1	1N3790-79450	ARM, ROLLING	1							
15	1	1N3420-79700	COLLAR, ROLLING	4							
16	1	22137-100000	WASHER 10,POLISHED	2							
17	1	22137-140000	WASHER 14,POLISHED	3							
18	1	22137-200000	WASHER, 20	2							
19	1	22242-000150	CIRCLIP 15	1							
20	1	22242-000200	CIRCLIP 20	1							
21	1	22417-160100	COTTER PIN	1							
22	1	22417-200160	COTTER PIN 2.0X16	2							
23	1	22550-050250	KEY 5X25	1							
24	1	24550-015100	BUSH 15X10	2							
25	1	24550-020200	BUSH 20X20,DRY	1							
26	1	24550-020200	BUSH 20X20,DRY	1							
27	1	26014-060162	BOLT M 6X 16	2							
28	1	26014-080202	BOLT M 8X 20	6							
29	1	26051-100002	NUT M10	4							

Fig.42. LABEL

(A)=JS-1080HT-SPQ

(B)=

(C)=

(D)=

(E)=

(F)=

REF.	LEV.	PARTS NO.	DESCRIPTION	QTY						I	R
				(A)	(B)	(C)	(D)	(E)	(F)		
1	1	1N1711-68190	MARK C YANMAR	2							
2	1	1N1711-68220	MARK,OIL CHECK	1							
3	1	1J3950-91010	MARK,BLINDFOLD	1							
4	1	1N3790-91050	LABEL, MODEL	1							
5	1	1N3910-91090	LABEL, SWITCH	1							
6	1	1N3910-91100	LABEL, TRAVEL	1							
7	1	1N3910-91110	LABEL, WORK	1							
8	1	1N3790-91310	LABEL, AUGER RL	1							
9	1	1N3320-91320	LABEL,SOUND	1							
10	1	1N3790-91600	LABEL, DRAIN	1							

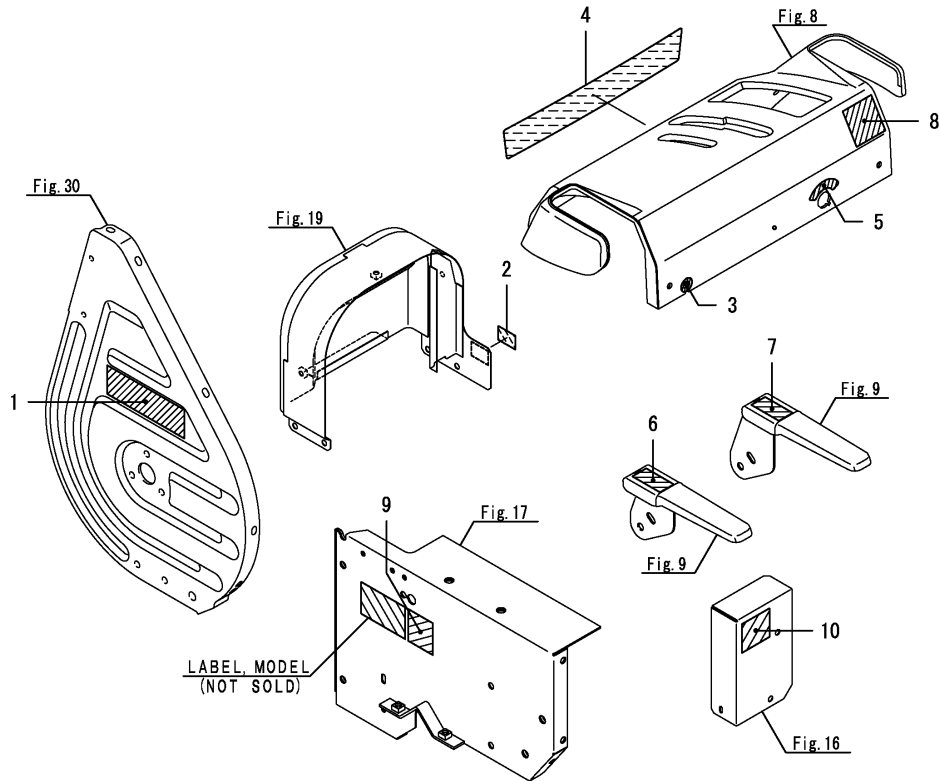
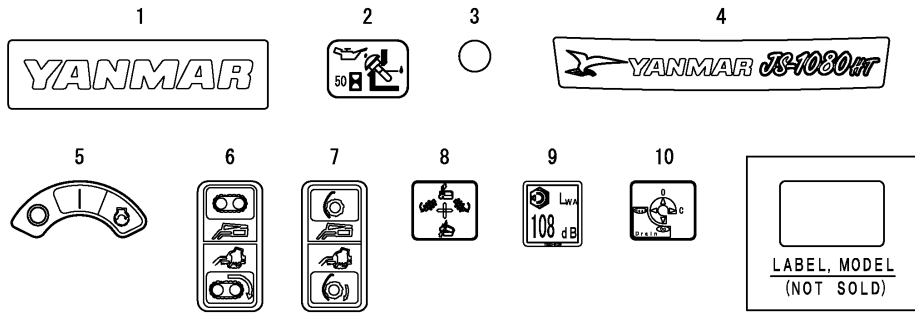


Fig.43. LABEL(SAFETY)

OCNP5-G50700 43. LABEL(SAFETY)

(A)=JS-1080HT-SPQ

(B)=

(C)=

(D)=

(E)=

(F)=

REF.	LEV.	PARTS NO.	DESCRIPTION	Q'TY						I	R
				(A)	(B)	(C)	(D)	(E)	(F)		
1	1	1N3390-92670	LABEL,DANGER	1							
2	1	1N3390-92680	LABEL,WARNING	1							
3	1	1N3390-92690	LABEL,WARNING	1							
4	1	1N3390-92700	LABEL,CAUTION	2							
5	1	1N3790-91250	LABEL, OPERATION	1							
6	1	160991-07260	LABEL, CAUTION	1							
7	1	1N3290-91350	CAUTION,MUFFLER	1							

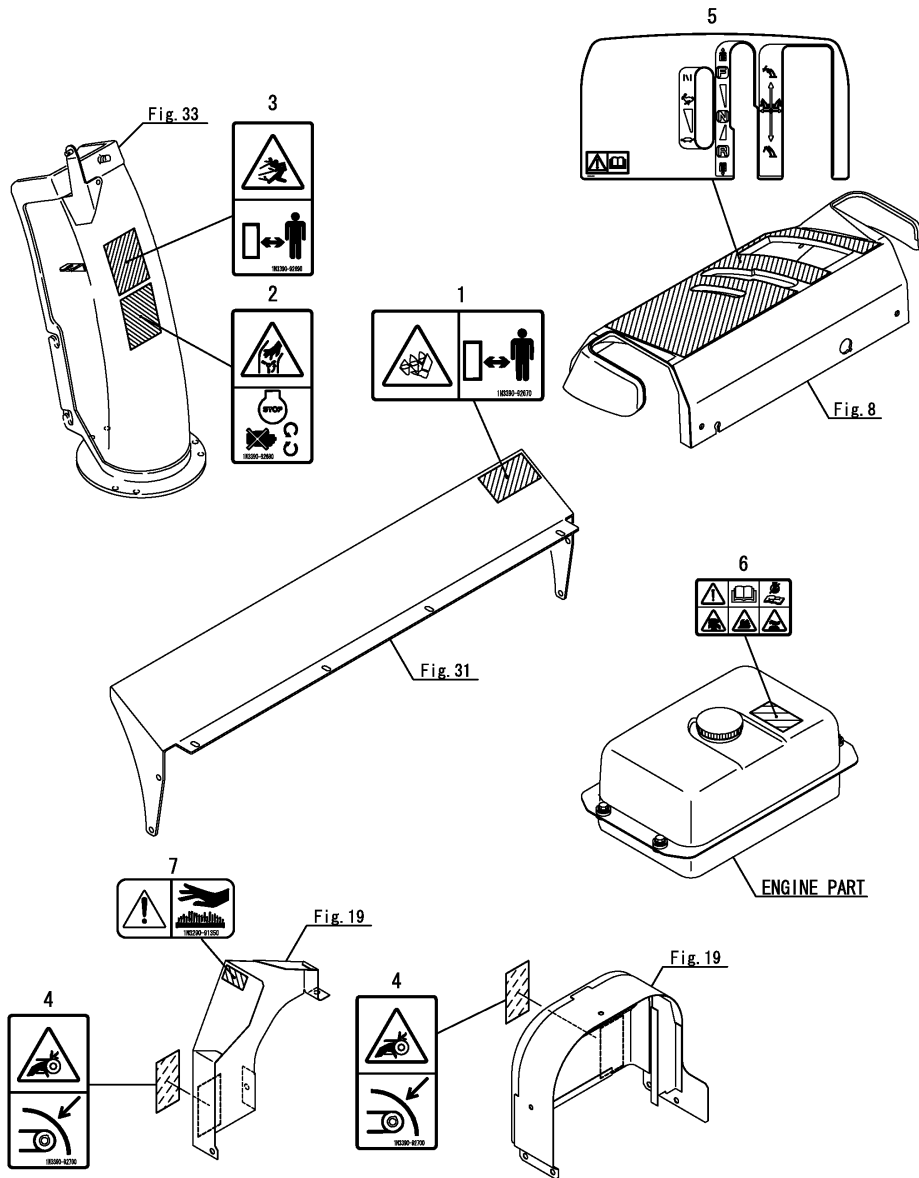


Fig.44. TOOL

(A)=JS-1080HT-SPQ  
(B)=  
(C)=

(D)=  
(E)=  
(F)=

REF.	LEV.	PARTS NO.	DESCRIPTION	Q'TY						I	R
				(A)	(B)	(C)	(D)	(E)	(F)		
1	1	1N3790-95000	SPANNER,	1							
2	1	1N3790-95050	SPANNER,	1							
3	1	28160-100120	WRENCH 10X12	1							

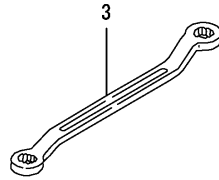
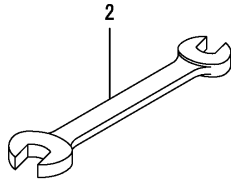
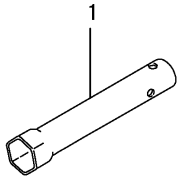


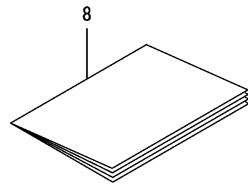
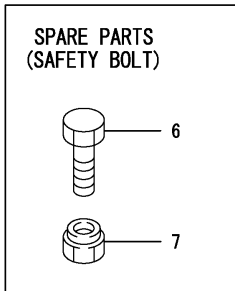
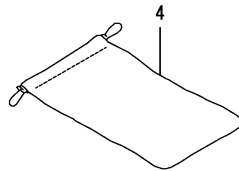
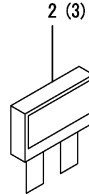
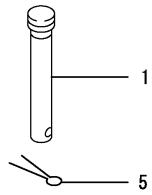


Fig.45. ACCESSORY

(A)=JS-1080HT-SPQ  
(B)=  
(C)=

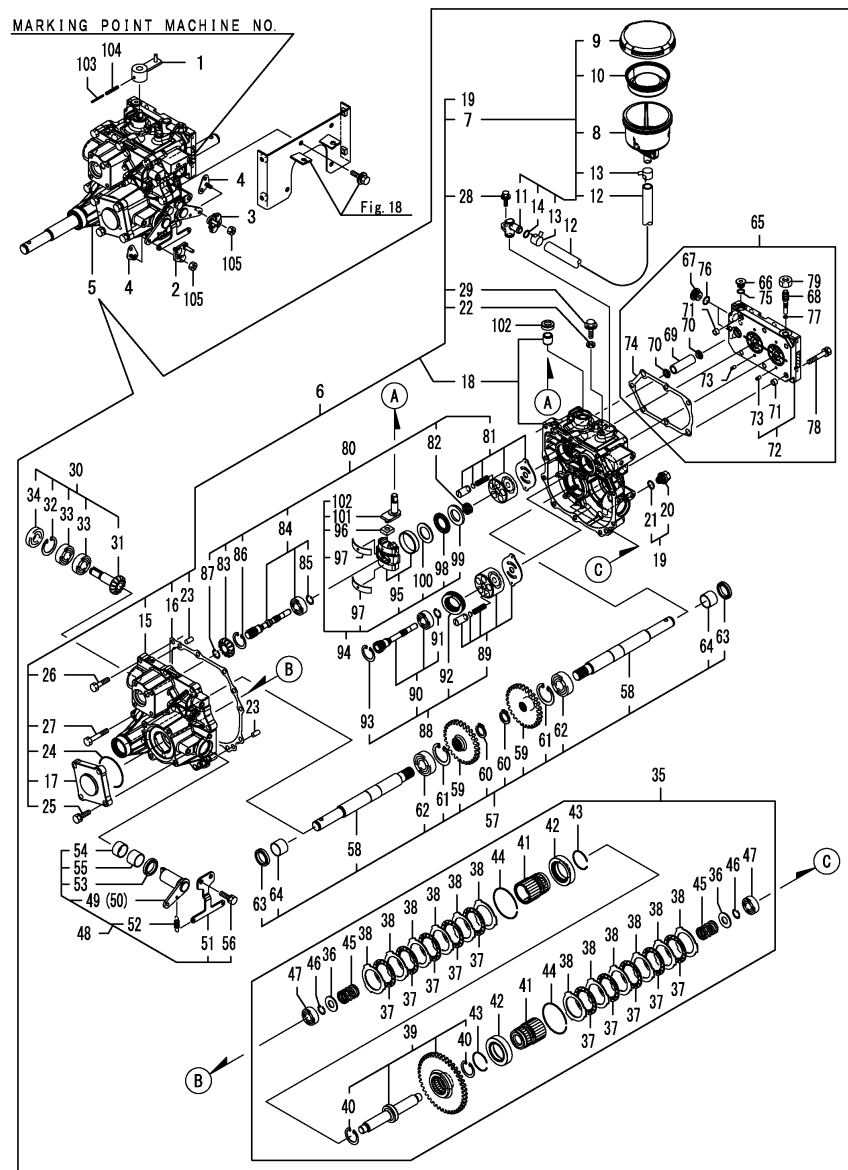
(D)=  
(E)=  
(F)=

REF.	LEV.	PARTS NO.	DESCRIPTION	Q'TY						I	R
				(A)	(B)	(C)	(D)	(E)	(F)		
1	1	1N3021-38101	PIN,AXLE	2							
2	1	1E8665-83170	FUSE,15A	1							
3	1	1E8665-83180	FUSE, 20A	1							
4	1	1F1150-92000	BAG,TOOL	1							
5	1	22417-200120	COTTER PIN 2.0X12	2							
6	1	26116-060202	BOLT M 6X 20	10							1
7	1	26347-060002	U-NUT M 6	10							1
8	1	0A000-E00300	OPERATION MANUAL	1							



Remarks  
(1)It is a spar part for safety bolt,  
group No.39,Ref.No.7.

Fig.46. MISSION



Remarks

Note: A machine in which the transmission unit is put into effect bears the stamped number to indicate this group number.

(A)=JS-1080HT-SPQ

(B)=

(C)=

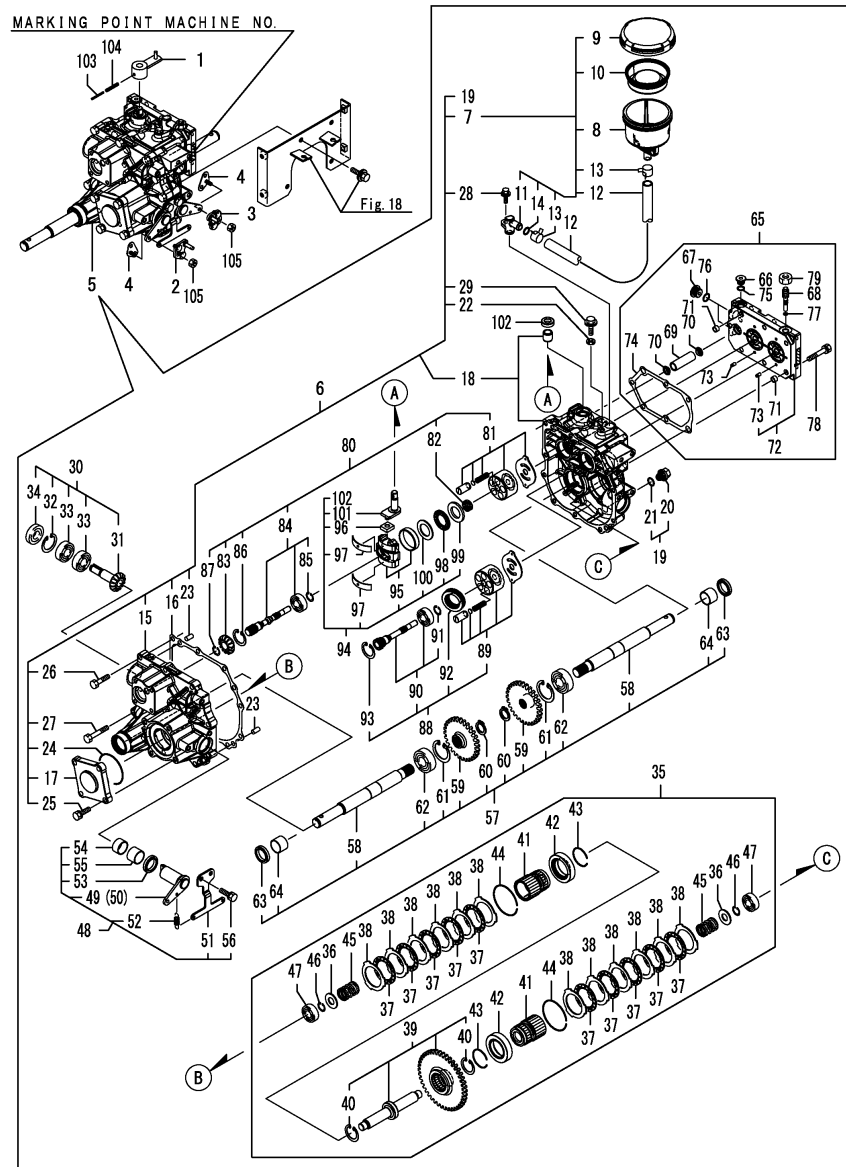
(D)=

(E)=

(F)=

REF.	LEV.	PARTS NO.	DESCRIPTION	Q'TY						I	R
				(A)	(B)	(C)	(D)	(E)	(F)		
1	1	1N3790-23500	ARM B ASSY, SHIFT	1							
2	1	1N3790-23600	ARM, L	1							
3	1	1N3790-23620	ARM, R	1							
4	1	1N3790-23640	SEAT, ARM	2							
5	1	187C08-50050	SB-10SCA ASY	1							
6	2	187C08-52010	MISSION CASE ASY	1							
7	3	187C08-53000	TANK, SUB KIT	1							
8	4	1N3021-23051	SUB TANK	1							
9	4	1N3021-23060	CAP, SUB-TANK	1							
10	4	1N3021-23070	DIAPHRAGM,SUB-TANK	1							
11	4	194856-24920	ELBOW	1							
12	4	187C00-56320	HOSE (OIL 600	1							
13	4	23080-019000	CLAMP, HOSE 19	2							
14	4	24311-000140	O-RING 1A P-14.0	1							
15	3	187C08-53010	MISSION CASE LA	1							
16	3	187C08-53040	PK (MISSION CASE	1							
17	3	187C08-53050	BRAKE COVER L	1							
18	3	187C08-53060	MISSION CASE R CMP	1							
19	3	1E8605-53060	BOLT, DRAIN W/MAGNET	1							
20	4	1E8605-53050	BOLT, DRAIN W/MAGNET	1							
21	4	24311-000160	O-RING 1A P-16.0	1							
22	3	22190-080000	SEAL WASHER 8(BOLT)	1							
23	3	22312-080160	PARALLEL PIN 8X 16	2							
24	3	24321-000650	O-RING 1A G-65.0	1							
25	3	26016-080302	BOLT M 8X 30	4							
26	3	26016-080352	BOLT M 8X 35	8							
27	3	26016-080502	BOLT M 8X 50	3							
28	3	26018-060162	BOLT M6X16	1							
29	3	26106-080162	BOLT M 8X 16 PLATED	1							
30	2	187C08-52020	INPUT SHAFT ASY	1							
31	3	187C08-53110	INPUT SHAFT	1							
32	3	22252-000400	CIRCLIP 40(H)	1							
33	3	24101-062034	BALL BEARING	2							
34	3	24421-174009	SEAL TC17 40 09, OIL	1							
35	2	187C08-52030	SIDE CLUTCH SHAFT AS	1							
36	3	1C1011-14310	WASHER 15X32X2	2							
37	3	1E6760-52350	PLATE 60, FRICTION	10							
38	3	1E6760-52360	PLATE 1.52T, STEEL	12							
39	3	187C08-54000	SIDE CLUTCH SHAFT CM	1							
40	4	22252-000360	CIRCLIP 36	2							
41	3	187C08-54030	SIDE GEAR 18T(S	2							
42	3	187C08-54040	SHIFTER	2							
43	3	187C08-54050	CIRCLIP 37	2							
44	3	187C08-54070	CIRCLIP 79	2							
45	3	187C08-54111	SPRING (SIDE CLUTCH	2							
46	3	22292-000150	CIRCLIP S-15	2							
47	3	24101-062024	BALL BEARING	2							
48	2	187C08-52040	CLUTCH ARM ASY	1							
49	3	187C08-54310	CLUTCH ARM L CMP	1							
50	3	187C08-54350	CLUTCH ARM R CMP	1							
51	3	187C08-54370	STAY	1							

Fig.46. MISSION



Remarks

Note: A machine in which the transmission unit is put into effect bears the stamped number to indicate this group number.

(A)=JS-1080HT-SPQ

(B)=

(C)=

(D)=

(E)=

(F)=

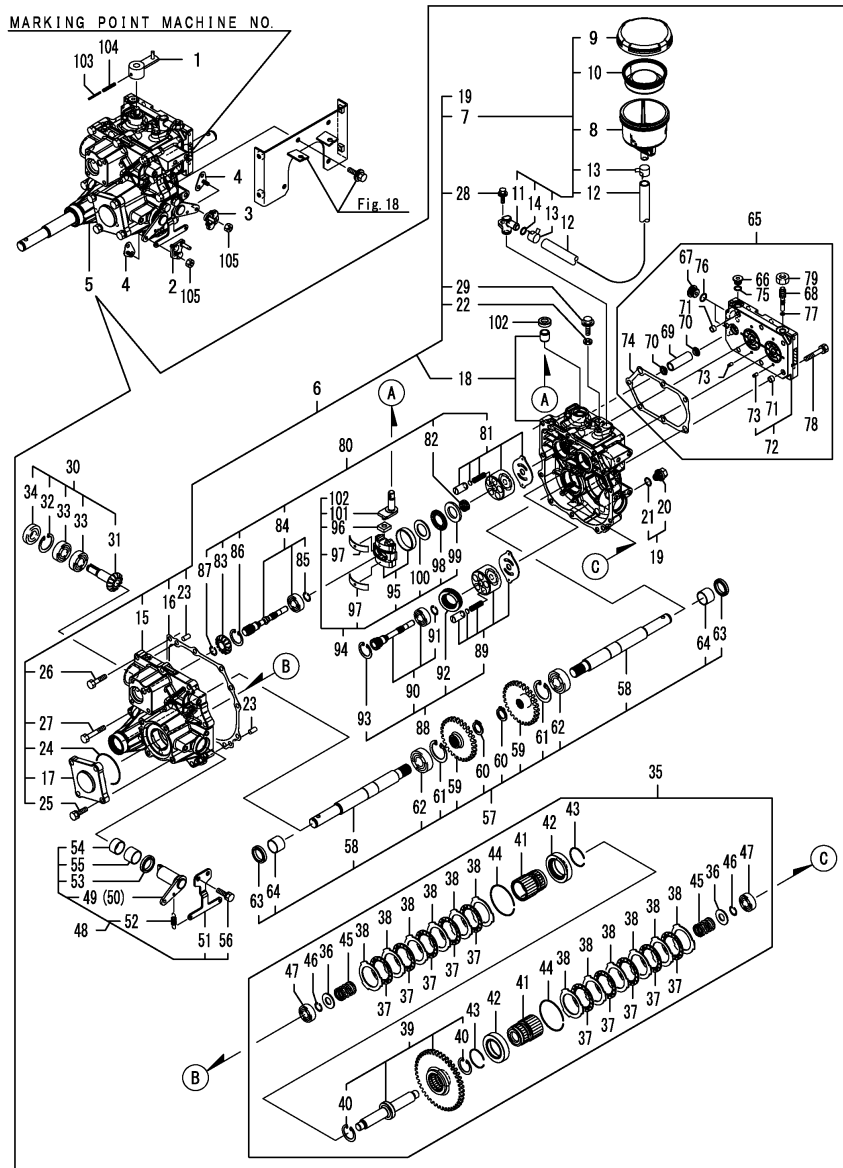
REF.	LEV.	PARTS NO.	DESCRIPTION	Q'TY						I	R
				(A)	(B)	(C)	(D)	(E)	(F)		
52	3	187C08-54380	RETURN SPRING	2							
53	3	24421-253506	SEAL TC253506,OIL	2							
54	3	24550-025150	BUSH 25X15	2							
55	3	24550-025200	BUSH 25X20	2							
56	3	26016-080202	BOLT M 8X 20	2							
57	2	187C08-52050	AXLE SHAFT ASY	1							
58	3	187C08-55010	AXLE SHAFT	2							
59	3	187C08-55030	FINAL GEAR 45T	2							
60	3	22242-000190	CIRCLIP 19	2							
61	3	22252-000470	CIRCLIP 47(H)	2							
62	3	24101-062044	BALL BEARING #6204	2							
63	3	24421-253506	SEAL TC253506,OIL	2							
64	3	24550-025200	BUSH 25X20	2							
65	2	187C08-52070	CENTER CASE ASY	1							
66	3	178076-12400	PLUG, G1/4	1							
67	3	168H31-29120	PLUG M18	2							
68	3	168P31-29150	PIN(BYPASS	1							
69	3	168H31-29950	FILTER(KHS13JA	1							
70	3	168H31-29960	SEAL	2							
71	3	194521-41570	PIN 11X7	2							
72	3	187C08-56100	CENTER CASE CMP	1							
73	4	192163-24420	PIN, KNOCK 3.5	4							
74	3	187C08-56150	PK (CENTER CASE	1							
75	3	24311-000110	O-RING 1A P-11.0	1							
76	3	24311-000160	O-RING 1A P-16.0	2							
77	3	24315-000050	O-RING 1B P-5.0	1							
78	3	26016-080452	BOLT M 8X 45	7							
79	3	26776-120002	LOCK NUT M12 PLATED	1							
80	2	187C08-52080	PUMP ASY	1							
81	3	192163-25101	BLOCK ASSY, CYL. P	1							
82	3	1A6460-25200	SPRING, PUMP	1							
83	3	187C08-53130	BEVEL GEAR 19T	1							
84	3	187C08-56200	PUMP SHAFT CMP	1							
85	4	22292-000150	CIRCLIP S-15	1							
86	3	22252-000350	CIRCLIP 35	1							
87	3	22292-000150	CIRCLIP S-15	1							
88	2	187C08-52090	MOTOR SHAFT ASY	1							
89	3	192163-25101	BLOCK ASSY, CYL. P	1							
90	3	187C08-56300	MOTOR SHAFT CMP	1							
91	4	22292-000150	CIRCLIP S-15	1							
92	3	187K00-99750	BEARING(THRUST BALL	1							
93	3	22252-000350	CIRCLIP 35	1							
94	2	187C08-52200	CONTROL ASY	1							
95	3	168D10-06010	SWASH PLATE CMP	1							
96	3	178080-06290	SHIFT BLOCK	1							
97	3	192163-27051	METAL, THRUST	2							
98	3	192163-27160	BEARING, K81105	1							
99	3	192163-27170	PLATE, THRUST A	1							
100	3	192163-27180	PLATE, THRUST B	1							
101	3	168H31-29410	CONTROL ARM	1							
102	3	168H30-29850	OIL SEAL(132507	1							

N:Old  $\frac{Yes}{No}$  New, Q:Old  $\frac{No}{Yes}$  New, R:Old  $\frac{Yes}{Yes}$  New, S:Old  $\frac{No}{No}$  New, W:Add, Z:Discontinued, F:Interchangeable by set, K:Q'ty Change

++ CONTINUE ++

(C)Copy Rights YANMAR CO.,LTD.

Fig.46. MISSION



Remarks

Note: A machine in which the transmission unit is put into effect bears the stamped number to indicate this group number.

(A)=JS-1080HT-SPQ

(B)=

(C)=

(D)=

(E)=

(F)=

REF.	LEV.	PARTS NO.	DESCRIPTION	QTY						I	R
				(A)	(B)	(C)	(D)	(E)	(F)		
103	1	22351-030032	SPRING PIN 3X32	1							
104	1	22351-050032	SPRING PIN 5X32	1							
105	1	26051-060002	NUT M 6	2							

## **Part Number Index**

All parts are stipulated in the order of part numbers.

(Depending on the area in which the part is used.)

This index will display the location of the part according to each part number.

## PARTS No. INDEX

PARTS No.	Fig.	Ref.No.
0A000-E00300	45	8
160991-07260	43	6
168D10-06010	46	95
168H30-29850	46	102
168H31-29120	46	67
168H31-29410	46	101
168H31-29950	46	69
168H31-29960	46	70
168P31-29150	46	68
178076-12400	46	66
178080-06290	46	96
187C00-56320	46	12
187C08-50050	46	5
187C08-52010	46	6
187C08-52020	46	30
187C08-52030	46	35
187C08-52040	46	48
187C08-52050	46	57
187C08-52070	46	65
187C08-52080	46	80
187C08-52090	46	88
187C08-52200	46	94
187C08-53000	46	7
187C08-53010	46	15
187C08-53040	46	16
187C08-53050	46	17
187C08-53060	46	18
187C08-53110	46	31
187C08-53130	46	83
187C08-54000	46	39
187C08-54030	46	41
187C08-54040	46	42
187C08-54050	46	43
187C08-54070	46	44
187C08-54111	46	45
187C08-54310	46	49
187C08-54350	46	50
187C08-54370	46	51
187C08-54380	46	52
187C08-55010	46	58
187C08-55030	46	59
187C08-56100	46	72
187C08-56150	46	74
187C08-56200	46	84
187C08-56300	46	90
187K00-99750	46	92
192163-24420	46	73
192163-25101	46	81
		89
192163-27051	46	97

PARTS No.	Fig.	Ref.No.
192163-27160	46	98
192163-27170	46	99
192163-27180	46	100
194521-41570	46	71
194856-24920	46	11
194990-22140	36	1
		2
195385-35870	2	5
	13	9
	15	10
198273-01230	2	1
1A6460-25200	46	82
1C1011-14310	46	36
1C1300-17250	16	1
1C1300-17300	26	1
1C7100-48250	13	10
	15	11
1E4060-26430	15	3
1E6102-84960	10	12
	24	6
1E6102-84970	10	13
	24	7
1E6650-82300	26	7
1E6760-52350	46	37
1E6760-52360	46	38
1E7030-51302-1	3	11
1E8605-53050	46	20
1E8605-53060	46	19
1E8665-83170	45	2
1E8665-83180	45	3
1E8775-81400	27	2
1E8775-84120	24	4
	28	6
1E8980-84900	24	5
1E9170-64750	13	11
1F1150-64230	4	4
1F1150-92000	45	4
1J3670-11390	15	2
1J3950-91010	42	3
1J3999-00040	8	1
1J3999-02010	18	1
1J3999-02160	33	1
1J3999-07000	10	1
	12	1
	15	1
1N1570-38200	30	1
1N1570-38210	29	1
1N1710-51350	23	9
1N1710-71062-2	29	3
1N1710-71072	29	4

PARTS No.	Fig.	Ref.No.
1N1710-82140	7	3
1N1711-51380	28	4
1N1711-51390	28	2
1N1711-51850	28	3
1N1711-51860	28	5
1N1711-68190	42	1
1N1711-68220	42	2
1N1711-73170	34	1
1N1711-73240	33	4
1N1711-73280	33	5
1N1723-51280	26	3
1N1723-52101	26	5
1N1960-38000	20	1
1N1960-73502	33	7
1N3020-71301-1	32	1
1N3021-11240-1	3	7
1N3021-23051	46	8
1N3021-23060	46	9
1N3021-23070	46	10
1N3021-31580	10	8
	13	1
1N3021-36130	17	2
1N3021-38101	21	2
	45	1
1N3021-38500-1	21	6
1N3021-38600-1	21	7
1N3021-52300	25	1
1N3021-73201	33	3
1N3021-74030	37	1
1N3021-74130	36	5
1N3260-73400	33	6
1N3270-12050	6	2
1N3280-55100	27	1
1N3280-73520	16	15
	41	10
1N3280-73740	16	16
	26	6
	41	11
1N3290-91350	43	7
1N3300-25100	21	1
1N3300-51010	23	1
1N3300-71320	32	2
1N3300-71330	32	3
1N3300-71401-1	29	5
1N3320-71290	3	13
1N3320-91320	42	9
1N3330-75200-1	39	3
1N3335-11080	3	3
1N3335-34100	15	5
1N3360-51100	23	2

PARTS No.	Fig.	Ref.No.
1N3360-51150-1	23	4
1N3360-51170	23	5
1N3360-51200	23	6
1N3370-71300	30	2
1N3370-71350	30	3
1N3370-74040	38	1
1N3370-76000-1	40	1
1N3390-38200-1	21	5
1N3390-92670	43	1
1N3390-92680	43	2
1N3390-92690	43	3
1N3390-92700	43	4
1N3410-74200	38	2
1N3420-75000-1	39	1
1N3420-75100-1	39	2
1N3420-79700	41	15
1N3440-21300	10	2
	12	2
1N3790-00050	1	1
1N3790-00100	1	2
1N3790-00150	1	3
1N3790-00250	1	4
1N3790-00500	1	5
1N3790-00700	1	6
1N3790-00750	1	7
1N3790-00760	1	8
1N3790-00770	1	9
1N3790-02100	2	2
1N3790-02150	2	3
1N3790-11000	3	1
1N3790-11050	3	2
1N3790-11100	3	4
1N3790-11150	3	5
1N3790-11200	3	6
1N3790-11270	3	9
1N3790-11280	3	8
1N3790-12000	4	1
1N3790-12010	6	1
1N3790-12020	5	1
1N3790-12100	4	2
1N3790-12170	4	3
1N3790-12300	5	2
1N3790-12400	6	3
1N3790-23500	46	1
1N3790-23600	46	2
1N3790-23620	46	3
1N3790-23640	46	4
1N3790-30200	7	1
1N3790-30400	8	3
1N3790-30500	7	2

## PARTS No. INDEX

PARTS No.	Fig.	Ref.No.
1N3790-31300	10	5
1N3790-31400	12	3
1N3790-31420	12	4
1N3790-31500	12	5
1N3790-31520	12	6
1N3790-31600	10	9
1N3790-31650	10	10
1N3790-31910	12	7
1N3790-31920	12	8
1N3790-32100	13	4
1N3790-32300	14	1
1N3790-32400	13	7
1N3790-32450	13	8
1N3790-34200	15	8
1N3790-35000	16	2
	41	2
1N3790-35010	16	3
	41	3
1N3790-35020	16	4
	41	4
1N3790-35100	16	5
	41	5
1N3790-35200	16	6
	41	6
1N3790-35300	16	7
	41	7
1N3790-35400	16	8
1N3790-35450	16	9
1N3790-35500	16	10
1N3790-35520	16	11
1N3790-35530	16	12
1N3790-35600	16	13
1N3790-35800	16	14
	41	8
1N3790-35850	26	2
	41	9
1N3790-36100	17	1
1N3790-36200	17	3
1N3790-36400	18	2
1N3790-36500	17	4
1N3790-36560	17	5
1N3790-36600	17	6
1N3790-37350	19	3
1N3790-38150	21	3
1N3790-38170	21	4
1N3790-38500	22	1
1N3790-51210	23	7
1N3790-51400	24	1
1N3790-51500	26	4
1N3790-71000	29	2

PARTS No.	Fig.	Ref.No.
1N3790-73350	35	1
1N3790-73450	35	2
1N3790-73500	35	3
1N3790-74000	36	3
1N3790-74010	36	4
1N3790-74080	37	2
1N3790-74100	37	3
1N3790-74200	36	6
1N3790-79000	41	12
1N3790-79400	41	13
1N3790-79450	41	14
1N3790-91050	42	4
1N3790-91250	43	5
1N3790-91310	42	8
1N3790-91500	24	2
1N3790-91510	24	3
1N3790-91600	42	10
1N3790-95000	44	1
1N3790-95050	44	2
1N3840-32000	13	2
1N3850-02200	2	4
1N3850-30350	8	2
1N3850-31000	9	1
1N3850-31100	9	2
1N3850-31200	10	3
1N3850-31300	10	4
1N3850-31451	10	6
1N3850-31460	10	7
1N3850-31751	11	1
1N3850-32050-1	13	3
1N3850-32150	13	5
	15	4
1N3850-32160	13	6
1N3850-51100	23	3
1N3850-51300	23	8
1N3850-51350	23	10
1N3850-73200	34	2
1N3850-73250	34	3
1N3850-73300	34	4
1N3850-73400	34	5
1N3860-11270	3	10
1N3860-34151	15	6
1N3860-34160	15	7
1N3860-34201	15	9
1N3860-34250	28	1
1N3910-31701	10	11
1N3910-91090	42	5
1N3910-91100	42	6
1N3910-91110	42	7
1S7302-30370	6	4

PARTS No.	Fig.	Ref.No.
1S7302-30370	41	1
7N3790-30400	8	4
7N3790-37100	19	1
7N3790-37300	19	2
7N3790-71500	31	1
7N3790-73100	33	2

PARTS No.	Fig.	Ref.No.
-----------	------	---------



***YANMAR CO.,LTD.***